

City of Summit

4th Community Forestry Management Plan

Plan Duration 2019 - 2023

April 2019, Revised August 2019



Nora Radest, Mayor

Common Council

B. David Naidu, President, Ward 1

Mike McTernan, Ward 1

Matthew Gould, President Pro Tem, Ward 1

Beth Little, Council Member at Large

Greg Vartan, Ward 2

Stephen E. Bowman, Ward 2, Liaison to Shade Tree Committee

Marjorie Fox, Ward 2

Michael Rogers, City Administrator

Paul Cascais, Director of Community Services

Aaron Schrager, Deputy Director of Community Services/City Engineer

Shade Tree Advisory Committee

John Kilby, Chairperson and Liaison to Environmental Commission

Paul Cascais, Department of Community Services

Sarah Meiring, Citizen-at-Large

Marc Montefusco, Reeves-Reed Arboretum

John Zucker, Liaison to Planning Board

Oliver Rodriguez, Builder/Architect Representative

Sheila Bonnell, Citizen-at-Large

Karin Pittle-Gale, Citizen-at-Large

Katherine Hensel, Liaison to Zoning Board

John D. Linson, Forestry Consultant

TABLE OF CONTENTS

Section 1 – Municipal/County Information Form	Page 3
Section 2 – Introduction	Pages 4-6
Section 3 – Community Overview – Five Years of Progress.....	Pages 7-11
Section 4 – Community Forestry Administration	Pages 12-14
Section 5 – City Map	Page 14
Section 6 – Training Plan	Page 14
Section 7 – Public Education, Awareness, Outreach	Pages 15-17
Section 8 – Statement of Tree Budget.....	Page 18
Section 9 – Statement of Plan Implementation	Pages 18-34
Section 10 – Community Stewardship Incentive Program (5 Years).....	Pages 34-36
Appendix.....	Page 37

1. Municipal/County Information Form

Municipality City of Summit

County Union County

Address 512 Springfield Avenue
Summit, New Jersey 07901

Contact Name and Title Paul Cascais, Director

Phone # (908) 273-6404

Fax # and E-mail (908) 608-1214 pcascais@Cityofsummit.org

Organization Name Department of Community Services

Mayor/County
Freeholder's Signature X Nora G. Radest Nora Radest, Mayor

Date of Management
Plan Submission March 2019

Time Period Covered in
Management Plan 2019-2023

Community Stewardship Incentive Program (CSIP) Practices Identified in Management Plan:

- | | |
|---|---|
| <input checked="" type="checkbox"/> CSIP #1 Training | <input checked="" type="checkbox"/> CSIP #8 Tree Maintenance and Removals |
| <input checked="" type="checkbox"/> CSIP #2 Community Forestry Ordinance
Establishment | <input checked="" type="checkbox"/> CSIP #9 Insect and Disease Management |
| <input checked="" type="checkbox"/> CSIP #3 Public Education and Awareness | <input checked="" type="checkbox"/> CSIP #10 Wildfire Protection |
| <input checked="" type="checkbox"/> CSIP #4 Arbor Day | <input checked="" type="checkbox"/> CSIP #11 Tree Planting |
| <input checked="" type="checkbox"/> CSIP #5 Tree Inventory | <input checked="" type="checkbox"/> CSIP #12 Tree Recycling |
| <input checked="" type="checkbox"/> CSIP #6 Tree Hazard Assessment | <input checked="" type="checkbox"/> CSIP #13 Sidewalk Maintenance Program |
| <input checked="" type="checkbox"/> CSIP #7 Storm Damage Assessment | <input checked="" type="checkbox"/> CSIP #14 Storm Water Management |
| | <input checked="" type="checkbox"/> CSIP #15 Other |

Office Use Only Certification

The above-named municipality/county has made formal application to the New Jersey Forest Service. I am pleased to advise you that after our review, the NJ Forest Service has concluded that this plan meets the standards set forth by the State and the NJ Community Forestry Council and is approved for the period covered.

Signed _____
(State Forester)

Approved Date _____

Section 2. INTRODUCTION

2.1 MISSION STATEMENT

Recognizing the enhancing value of street trees to the quality of life in the City of Summit, it is the City's mission to promote a sustainable, productive urban community forest.

2.2 GOALS

The City recognizes the intensely developed land use status within the City and its surrounding municipalities of Millburn, Springfield, Mountainside, Berkeley Heights, New Providence, Chatham Township and Chatham Borough. The City's goal is to maintain its proactive approach in the management of its tree-lined streets and parkland. The Common Council, DCS Director, City Forester and the Shade Tree Advisory Committee believe that by taking logical steps as outlined in the Community Forestry Management Plan and providing reasonable levels of resources to accomplish them, the possibility of natural disaster, structural tree failure, or other tree-related hazards can be minimized, reducing residents' exposure to such hazards, increasing public safety, and enhancing the quality of life.

2.3 OBJECTIVES

The City of Summit Community Forestry Management Plan will enable the Director of Community Services, City Forester, and the Shade Tree Advisory Committee to maintain a high level of services within City budget constraints in meeting present and future tree maintenance needs. This Management Plan provides a blueprint for the regular evaluation of Summit's shade tree assets and liabilities, and charts a course setting short and long-term objectives to correct existing deficiencies, and to maintain and enhance existing programs of tree inventory/assessment, hazard tree identification and management, tree planting, and tree maintenance and care.

GOAL	OBJECTIVES
Tree Maintenance and Care	
Maintain a tree maintenance and customer service response	1) Maintain a contractual tree pruning line item in municipal budget.
	2) Maintain a 10-year tree pruning cycle.
	3) Pursue alternative grant and other funding options.
	4) Maintain existing customer service response system.
	5) Continue a co-operative program with the JCP&L utility line clearance activities in the City.
	6) Be observant of possible new insect and disease problems and provide IPM training for key personnel.
	7) Be more proactive in maintaining trees in parks and open space areas.

GOAL	OBJECTIVES
	8) Seek CSIP grants to supplement in-house tree pruning and removal efforts

2.4 LIABILITY STATEMENT

“Although street trees are an asset to the City of Summit, it is inevitable that they will mature and require care, maintenance and eventual replacement. Care and maintenance, in addition to planting “the right tree in the right place,” can help insure that City trees not only contribute to the environmental and economic vitality of the area, but also reduce the potential hazards to public safety. Our community must work within a reasonable budget that may not be able to meet each and every need of our community forest immediately. Therefore, it is the intent of this plan to focus available resources to the greatest need, and step-by-step work towards a healthy forest with commensurate reduced risks to public safety.

We feel that by taking logical steps, as outlined in the City of Summit’s Community Forestry Management Plan, we will garner public support for plan implementation and demonstrate the long-term benefits to the environment and public safety.

We also want to become more pro-active in the management and care of our trees. Through inventory and hazard assessment, we will position the Department of Community Services to take corrective action prior to structural tree failure or the occurrence of other hazardous tree-related conditions. Good maintenance and care will reduce probability, but unexpected events will still occur.

Following this Management Plan will demonstrate that the City of Summit is devoting reasonable levels of resources in a planned manner to reduce the number of tree-related accidents, and thereby reduce its exposure to liabilities and increase public safety.”

GOAL	OBJECTIVES
Tree Inventory / Assessment	
Maintain an active assessment of the condition of Summit’s street and public property trees.	1) Conduct an annual Windshield Tree Survey of public right-of-way, and prioritize needed tree maintenance.
	2) Apply for a CSIP Grant to conduct a new tree inventory. Summit’s current inventory is 20 years old.
	3) Conduct a new tree inventory if funding is available.
Hazard Tree Identification and Management	
Prompt removal of dead and diseased trees	1) Continue to conduct an annual hazard tree inspection during late summer/early fall.
	2) Continue to remove all dead and diseased trees within 9 months of marking.

GOAL	OBJECTIVES
	3) Annually budget to contract out large tree removals.
	4) Proactively remove marginal trees during road construction projects.
	5) Systematically remove all City Ash Trees that will not be treated for Emerald Ash Borer when possible as resources allow. Remove City Ash Trees as they become infected with Ash Yellows or infested with Emerald Ash Borer.
	6) Proactively remove ash trees within the City's right-of-way in conjunction with JCP&L line clearance cycles and City road reconstruction projects.
	7) Prepare a fact sheet for the public on storm damage prevention and after care.
	8) Provide Hazard Tree Identification training for personnel and maintain existing Identification management programs (see analysis in Section 9).
Identify and correct hazardous sidewalk conditions	1) Maintain communications with Division of Code Administration, which supervises sidewalk replacement program.
	2) Maintain a proactive inspection system of public sidewalks using volunteers.
Tree Planting	
Maintain tree replacement program	1) Maintain tree planting budget line item.
	2) Continue to pursue grants and other funding options.
	3) Continue to promote a no-net tree loss platform, along with the Right Tree/Right Place platform.
	4) Provide tree planting fact sheets to property owners, and utilize the City website to educate the public on the many benefits of street trees and trees on private property.
	5) Accelerate planting program to replace Ash population and maintain Summit's tree canopy.
	6) Promote Summit's Commemorative Tree Dedication Program.
	7) Research and create an Invasive Ordinance.

Section 3. COMMUNITY OVERVIEW – FIVE YEARS OF PROGRESS

The City of Summit was incorporated on March 8, 1899. Located in Union County, it is twenty miles west of New York City and ideally situated atop the second range of the Watchung Mountains, with urban New Jersey on one side and the hills and valleys of horse country on the other.

Summit's train station is one of the most active in the area, with a direct connection to New York City. Bus transportation is also available to New York City. Route 24 and Route 78 form two of Summit's borders, without intruding into the City itself.

Summit hosts a broad economic and ethnic cross-section, largely mirroring the makeup of the nation as a whole. According to a 2010 census, the population is 21,457. It has 7,708 housing units. It provides almost 200 units of subsidized public housing for low-income residents. One third of Summit's dwelling units are multi-family use.

Summit's "pedestrian friendly" downtown employs about 1900 people in more than 600 retail stores, restaurants, businesses, and professional offices.

Summit is 6.1 square miles. It has 66 miles of roads, 5 City parks and 32 pocket parks, including an arboretum and 3 county parks. The City of Summit has a long love affair with street trees. For many years, it had a Shade Tree Department, operating independently of the City's Public Works operations. In an effort to improve efficiencies and reduce costs, the Shade Tree Department was absorbed into Public Works, which itself later became a part of the Department of Community Services. The result has been a coordinated approach to tree management.

Summit's most recent Master Plan Re-examination Report was written in November 2016. Specific goals and objectives from the past and most recent Master Plans, which mesh with the Community Forestry Management Plan, are as follows:

LAND USE

- Preserve existing residential neighborhoods.
- To clearly define commercial and industrial areas with natural boundaries and effective buffers.
- To protect natural and environmental resources including flood plains, wetlands, steep slopes, and aquifer recharge areas suitable for public and quasi-public recreational activities.
- To identify and preserve environmentally sensitive areas in the City.

CONSERVATION

- To encourage the use of conservation easements on environmentally sensitive lands in private ownership to protect future disturbance.
- To conserve treed right-of-way, continue a tree planting program, and encourage protection and replacement of trees including the designation of landscape trees.

PARKS AND OPEN SPACE

- To identify as open space/recreation areas certain public and private lands that serve as open space, buffers, streetscape or vistas; and/or are in a strategic location as it relates to existing parks and recreation facilities.
- To encourage public/private partnerships, and continue to explore creative funding opportunities.
- To preserve and enhance park and recreation facilities, where appropriate within the City, to meet the needs and demands of present and future residents.
- To explore the creation of a linear park along the Passaic River.
- To create physical links, where feasible, between City parks and the County park system.

CENTRAL BUSINESS DISTRICT

- To maintain attractive gateways into downtown through use of landscaping, signage, traffic calming techniques, and public art.

POLICY

- Land developments should be designed to protect and enhance the diversity of the City, and to protect neighborhoods from the intrusion of inappropriate or incompatible uses.

A copy of the revised Community Forestry Management Plan will be provided to our City Planner to develop even stronger links between the two plans in the future.

Summit has 350 acres of public parks of all sizes. The City is also adjacent to the Watchung Reservation, a 2,000-acre facility of the Union County Park System, and a portion of which is located within Summit's borders. There are presently no plans to expand Summit's open space through Green Acres acquisitions.

The City conducted a Street Tree Inventory in 1999. The following data summarizes the results of the survey:

1999 INVENTORY SUMMARY

- Total street tree population in 1999 was 5,610
- Average diameter – 16"
- Number of species represented – 64

From 2001 through 2018, the City of Summit removed 2,110 trees and planted 2,143 trees. (In the Appendix, you can find data regarding the Inventory, and also a Summary of Annual Activity.)

3.1 SIGNIFICANT ACHIEVEMENTS IN COMMUNITY FORESTRY OVER THE THREE PRIOR COMMUNITY FORESTRY MANAGEMENT PLANS

❖ Establishment of a Shade Tree Advisory Committee

The Public Works Committee had previously functioned as The Shade Tree Advisory Committee. In 2005, the Common Council established a nine member Shade Tree Advisory Committee comprised of volunteer residents, a Council liaison, DCS Director and the City Forester. Resident volunteers usually are garden club, zoning or planning board, or arboretum members.

❖ Preservation Ordinance for Trees on Private Property

The first duty of the Shade Tree Advisory Committee was to investigate the Preservation Ordinances in other municipalities. This study culminated in the passage of Summit's own Tree Preservation Ordinance in September, 2006.

❖ Summit Commemorative Tree Dedication Program

Also in 2006, the Tree Dedication Program was launched to enable Summit residents to participate in rejuvenating Summit's aging urban forest.

Trees may be purchased in honor or remembrance of a person, group or event, and installed on City property. (See information in the Appendix.)

❖ Downtown Revitalization

Over 200 street trees were planted in Summit's downtown in 2001 in specially designed and constructed tree wells. The tree wells have raised curbs to prevent ice-melting brine from entering the soil, a structural soil mix, and an underground drainage system to remove excess water in wet weather periods.

3.2 IMPROVEMENTS/GOALS – 2013-2018

The City of Summit encountered and resolved many problems during 2013-2018, and we really are better off today than we were five years ago. The following is a list of improvements made over the last management period:

PROBLEM	SOLUTION
1) Provide more staff/resources to water new plantings.	Very few, if any, new plantings were lost.
2) Provide more staff/resources to elevate and correctively prune young trees.	Shade Tree Advisory Board formed "Summit Suckers," a team of trained volunteers.

3) Provide more staff/resources to update our tree inventory, and use enhanced technology in our customer service program.	Apply for a CSIP Grant to fund an inventory.
4) Be proactive in identifying and correcting sidewalk issues.	A cooperative effort initiated with Zoning Inspectors.
5) Update our Landmark Tree List and post a virtual arboretum on the City website.	This is an on-going project. Drone photography to be added.
6) Provide better outreach and communication with the Community.	Communications Officer has released numerous articles.
7) Be proactive in preventive maintenance of established trees.	Training provided by Staff.
8) Purchase a new log truck.	Truck has been delivered and is in use.
9) Purchase a new aerial bucket truck with a higher working height.	Truck has been delivered and is in use.
10) Emergency Preparedness.	Training in hazard tree identification is on-going. TDMA Application is in progress.

3.3 OTHER ACHIEVEMENTS/GOALS/RESOURCES SINCE LAST MANAGEMENT PLAN

The City of Summit has always devoted a lot of time and resources to community environmental initiatives since the beginning as evidenced by the City budget of almost a million dollars dedicated to the City's forestry efforts and documented volunteer efforts. Over the past decade however, the City has been focused on fine-tuning its environmental programs and strengthening its SOPs. This year, we have begun the process of rewriting the City's Tree Ordinance, adopted in 2006, a labor-intensive endeavor as it will require much input from various stakeholders and Council approval.

- Summit is Sustainable Jersey Certified at the Silver Level for 2010, 2011, 2014, 2015-2018, and 2017-2020. During these time periods, Summit has walked away with the Sustainability Champion Award for the Medium Municipality category in 2009, 2010, 2011, 2014, and 2017. We are currently working on certification for 2019.
- In March 2019, the City of Summit met with the N.J.D.E.P. regarding three potential sites for Temporary Debris Management Areas approval. After the pre-screening meeting, Summit submitted its application for one N.J.D.E.P. approved Temporary Debris Management Areas in April 2019. Summit should be notified by year's end 2019 latest regarding TDMA approval for that site.
- The City of Summit, in cooperation with The Summit Park Line Foundation, has created a pedestrian linear park along the abandoned Rahway Valley Railroad (RVRR) that runs from the

edge of the downtown, in front of Overlook Medical center, along with a 1.2-mile path into Briant Park. The City acquired the rights to the land, at no cost from the State of New Jersey, to convert it into a park. The Park Line Foundation was instrumental in this achievement.

The Summit Park Line concept was also officially incorporated into the City's Master Plan by the Planning Board. Phase I, the quarter mile directly in front of Overlook Medical Center, is near completion including a hiking path with a trail head off of Upper Overlook Road connecting Morris Avenue and Broad Street. We are in the planning stages of Phase II. The Park Line is a not-for-profit 501(c)(3) project.

- The City has segmented its internship program and now has one to two interns annually dedicated on working with the City's Environmental Commission (EC) and/or the City Forester to focus on the project milestones within the City's Forestry Management Plan and generally on environmental initiatives, with an emphasis on the City's tree canopy and related projects. In summer 2019, one intern focused on EC project and another went out in the field with the City Forester. The intern focused on the Windshield Tree Survey with the City Forester, which allowed the City to conduct the Survey at a different time of year, giving staff a more holistic overview of its canopy.
- The Shade Tree Advisory Committee and staff has begun work on strengthening and clarifying all tree-related ordinances and applications to better protect the City's canopy.
- With the recent addition of two dedicated communications staffers, including a Chief Communications Officer, the City's public outreach campaign on environmental issues has increased dramatically.
- The City's Environmental Commission authored a 1991 publication titled "*Landmark Trees of Summit*," identifying thirty-six trees that were worthy of special recognition. The Commission identified a landmark tree as "one that, by virtue of its size, age, species, conformation, and/or historical significance, merits special recognition." The booklet contains the location, a description of each tree including species, and two photographs (in full leaf and without foliage). (See Appendix for a list of the Landmark Trees of Summit.)

Section 4. COMMUNITY FORESTRY ADMINISTRATION

CITY OF SUMMIT ORGANIZATION CHART



As evidenced by the above chart, Summit has a very effective table of organization and a responsive customer service program. Residents call or e-mail tree service requests directly to the Department of Community Services where they are logged into the City's software which tracks public works issues and allows City management to analyze the data. The tasks are assigned either to the Forester or the Parks and Shade Tree Supervisor for follow-up. The Forester makes inspections on his next scheduled day in the office, or the Parks and Shade Tree Supervisor inspects service requests as part of his routine duties.

Completed inspections become prioritized work orders when the results are entered into the platform. Work orders remain in the program, providing a historical record of work requested and work performed.

COMMON COUNCIL

- Approves the Community Forestry Management Plan.
- Approves Operational and Capital Budgets.
- Maintains a liaison with the Shade Tree Advisory Committee.

CITY ADMINISTRATOR

- Channels information to the appropriate Department Head.
- Interacts on a regular basis with the Director and Deputy Director of Community Services.

DIRECTOR AND DEPUTY DIRECTOR OF COMMUNITY SERVICES

- Jointly serve as the City Shade Tree Contact.
- Oversee the day-to-day administration of the tree maintenance operation.
- Prepare annual tree-related budget requests.

CHIEF COMMUNICATIONS OFFICER

- Publishes regular tree-related informational updates on social media.
- Maintains a Shade Tree presence on the City website.
- Is Summit's main Public Education, Awareness and Outreach Advocate.

PUBLIC WORKS SUPERINTENDENT/MANAGER

- Oversees the field day-to-day operations of the Parks and Shade Tree Unit.
- Provides another layer of oversight and accountability over the Public Works Division as it relates to trees.

CITY FORESTER

- A part-time consultant who is a Licensed Tree Expert.
- Creates tree-related work orders.
- Conducts an annual Windshield Tree Survey.
- Attends Shade Tree Advisory Committee meetings.
- Assists in preparing tree-related news releases and provides weekly customer service.
- Prepares tree-related grants and the five-year Community Forestry Management Plan.

SHADE TREE ADVISORY COMMITTEE (10 members)

- Helps maintain required Core and annual CEU requirements and provides insight into developing City tree-related policies and ordinances.
- Meet monthly except during the summer - members include liaisons with the Common Council, Zoning Board, Planning Board, local builders, and Reeves-Reed Arboretum, as well as the public-at-large.
- Oversees writing the five-year Community Forestry Management Plan.
- Sponsors Arbor Day and educational programs at the library and the "Summit Suckers," a volunteer street and park tree branch elevation organization.
- Maintains the Landmark Tree List.

PARKS AND SHADE TREE SUPERVISOR

- Oversees a four-member tree crew and makes tree removal application inspections.
- Coordinates joint tree removal efforts with utility companies.
- Schedules and coordinates work contracted out to private tree companies.

- Oversees maintenance of tree equipment.

PARKS AND SHADE TREE STAFF

- Conduct most tree pruning, tree removal, and stump removal tasks in-house.
- Receive annual Line Clearance Certification.

CONTRACTED TREE SERVICES

- The City of Summit has a well trained and equipped four-member tree crew capable of handling most tree maintenance problems. However, many of the large street trees cannot be reached by the City's aerial bucket truck, and many large tree removals require a tree crane and specialized equipment. Most of the tree planting is contracted out due to time constraints during the spring and fall.

Section 5. CITY MAP

No significant changes over previously filed map.

Section 6. TRAINING PLAN

Funding is annually budgeted for the mandatory New Jersey Forestry Council's training requirements in the Public Works operations budget. It is the City's intention to always have at least one member of the Shade Tree Advisory Committee and one member of the Public Works Division Core Certified. It is our intention to maintain or exceed this balance in the future. Presently, two volunteers and two employees are Core Certified.

Each year CEU credits are accrued by both the Shade Tree Advisory Committee members and Public Works Division staff in training sessions sponsored by the New Jersey Forestry Service. The City sends field personnel to pertinent training sessions whenever possible. Specific refreshment training areas include hazardous tree identification, integrated pest management, and chain saw and chipper safety.

The Rutgers New Jersey Agricultural Experiment Station Office of Continuing Professional Educations offers a course entitled "Hazardous Tree Identification". The course is based on *"A Photographic Guide to the Evaluation of Hazard Trees in Urban Areas"*, published by the International Society of Arboriculture, and is the recognized standard text for tree hazard awareness. It is recommended that at least one employee from Parks, Recreation and Shade Tree take the full day course each year. The course is offered twice per year.

The City also participates in training opportunities provided by Union County. The City has three DPW employees certified for Line Clearance Pruning, and maintains annual training provided by ACRT. Two goals over the next five years will be for DPW workers to participate in hazard tree awareness courses, and for Shade Tree Advisory members to attend the New Jersey Shade Tree Federation Annual Meeting whenever possible. The advancing Emerald Ash Borer infestation necessitates that we proactively provide integrated pest management training for as many employees as possible.

Section 7. PUBLIC EDUCATION, AWARENESS, OUTREACH

7.1 ARBOR DAY PROGRAM

The City of Summit's largest public outreach each year is their Arbor Day Program. Arbor Day Celebrations usually involve City schools, the Reeves-Reed Arboretum, Summit Garden Club, Shade Tree Advisory Committee, and other community groups.

Summit has held 24 consecutive tree plantings and dedications on Arbor Day resulting in the City being granted the National Arbor Day Foundation's "Tree City USA" designation as many times. Since the establishment of the Shade Tree Advisory Committee, the City has used the annual Arbor Day celebrations to educate the public, partnering with the Summit School District and celebrating at least one of the annual celebrations at one the City's primary centers for the benefit of the students and their guests.

The following is a summary of past annual Arbor Day Programs:

DATE	ACTIVITIES
2002	Planted a Red Oak at Jefferson School.
2003	Planted (2) Flowering Cherries at the dedication of the new Public Works Garage.
2004	Planted Liberty Elms on the Village Green.
2005	Celebrated the re-planting of Canoe Brook Parkway with 66 Flowering Cherries.
2006	Celebrated the relocation of a Southern Magnolia to the Whittredge / Prospect Hill Traffic Island, which was sponsored by Peapack Gladstone Bank.
2007	Dedicated (3) October Glory Red Maples on Maple Street at the Library Parking Lot.
2008	Planted (2) Liberty Elms in Upper Tatlock Field.
2009	Planted a Flowering Dogwood at Wilson Primary Center.
2010	Planted a Pink Flowering Dogwood at Jefferson School.
2011	Planted (2) Dogwoods at Wilson and Jefferson Primary Centers. Reeves-Reed Arboretum (in celebration of their "Year of The Tree" effort)
2012	Planted a European Copper Beech at the Summit Recreation Center. Planted a Dogwood at Wilson Primary Center.
2013	Planted a Sugar Maple at Jefferson Primary Center.
2014	Planted a Dogwood at the Summit Primary Center at Wilson School.
2015	Planted (3) Sargeant Cherries and (1) Armstrong Maple at Jefferson Primary Center.
2016	Planted a Galaxy Magnolia and Silverbell at the Summit Library and Franklin Elementary School.
2017	Planted a Japanese Tree Lilac at Brayton Elementary School.
2018	Planted (2) Flowering Dogwoods at Washington School.
2019	Planted a Kwanzan Cherry Tree at Lincoln-Hubbard School.

7.2 PUBLIC OUTREACH ARENAS AND EVENTS

- Amy Cairns is Summit's Chief Communications Officer. She has been a huge advocate in reaching the public about tree-related issues on both the City's website, www.cityofsummit.org, as well as social media. (Some examples of tree-related outreach are included in the Appendix.)
- Reeves-Reed Arboretum is a non-profit 13.5-acre arboretum and garden located at 165 Hobart Avenue in Summit and owned by the City of Summit. It is operated by private donations and has its own Board of Trustees. It provides horticulture education programs and gardening workshops for both children and adults. Art exhibits, music concerts, maple sugaring, summer camps, and topics of seasonal interest are all aspects of Reeves-Reed's outreach to the community. The Reeves-Reed website, www.reeves-reedarboretum.org, is loaded with activities, information, and opportunities to volunteer.
- Other outreach events have included an evening presentation on "Landmark Trees in Summit" at the Library, and an evening presentation of "Native Trees and Shrubbery in Summit" at the Summit Library on April 23, 2016 and April 24, 2018. Occasionally, free seedlings are given to the public.
- The formation of the "Summit Suckers," an organization of volunteers each assigned to a specific area of the City for the purpose of nurturing and elevating the branch level of young trees on public property or within public right-of-way. Volunteers were equipped with both tools and training. Also, fact sheets are distributed to property owners to encourage planting.
- The Shade Tree Advisory Committee has set the following goals for the next five year management period:
 - Utilize the Summit Farmer's Market for the distribution of seedlings in the spring.
 - Create a promotional tree planting flyer to be distributed at the Farmer's Market, Community Services lobby, National Night Out summer event etc., to encourage private property owners to re-plant trees on their own property.
 - Revise the Parks and Shade Tree unit's door hanger for residents to be more assertive in replanting City trees that have been, or will be, removed. It will notify the resident that a replacement City tree will be planted; while the resident can object to the City regarding the replacement tree, the City reserves the right to override the objection.
 - Promote the use of Plant-A-Tree banners in the downtown, similar to those in neighboring communities.
 - Create a follow-up door hanger tag providing recommended care for newly planted trees in the City's right-of-way.
 - Coordinate additional tree-related educational workshops in cooperation with Reeves-Reed Arboretum.
 - Utilize the City website to a greater extent offering tree advice such as proper planting techniques, maintenance and preservation of geriatric trees, etc.
 - Strengthen existing ties with environmental programs within the Summit school system.

7.3 TREE REMOVAL, REPLACEMENT, AND PROTECTION INFORMATION

- Residents affected by tree removals or tree replacements are notified directly by letter. NJ.com, Patch and TAP outlets serve the City of Summit. The City issues press releases and letters to the editor to keep residents up to date on tree-related events and policies. The City's social media activity (Facebook, Twitter, etc.) provides an additional forum, as well as TV 36, the local cable station and the City's website is www.Cityofsummit.org. All of the above media have been used to disseminate tree-related information.
- Procedures for compliance with the City's Tree Protection Ordinance on private property are listed on the City website.
- Work is continually conducted in updating "*Landmark Trees of Summit*," a booklet that depicts trees within the City that meet one or more of the following criteria:
 - 1) The tree species is rare.
 - 2) The tree is more than one hundred (100) years of age.
 - 3) The tree is of an abnormal height or has a significant trunk diameter or dripline diameter for a tree of its species.
 - 4) The quality of the tree foliage is extraordinary for a tree of its species.
 - 5) The location, shade value, fragrance, erosion control, aesthetic, features, or scenic enhancement of such tree is of special importance to the City.

Work continues on assembling an updated booklet and it will also be available as a "virtual arboretum" on the City website.

- Unfortunately, a number of Landmark Trees have succumbed to old age and storm damage over the last few years. This is an on-going process.
- In addition, members of the Shade Tree Advisory Committee have written various articles about Arbor Day, tree care, and planting that appeared in TAP, the Summit Patch, on social media, and on the City's website. The Shade Tree Advisory Committee also has produced a recommended list of trees that thrive in Summit to encourage residents to plant these types of trees that are appropriate for our urban forest, particularly as replacement for trees lost during the recent storms (see Appendix).
- The Summit Communications Officer has also been a great asset in distributing ALB, EAB, tree planting, and other tree-related information to the public.

Section 8. STATEMENT OF TREE BUDGET

		CFMP BUDGET
Administration	Municipal Salaries	\$558,000.00
	Fringe	
	Indirect Costs	\$40,000.00
	<i>Forestry Consultant</i>	
	Volunteer Contribution (<i>Rate at www.independentsector.org</i>)	\$700.00
	Other	
Subtotal		\$598,700.00
UCF Stewardship	Planting	\$18,500.00
	Pruning	\$35,000.00
	Stump Removal	
	Leaf Collection	
	Insect/Disease Management	
	Emerald Ash Borer Management	
	Other	\$125,000.00
Subtotal		\$178,500.00
Education and Outreach	Training and Education (<i>Municipal + County Employee</i>)	\$750.00
	Training and Education (<i>Volunteer</i>)	
	Public Outreach	Provided by another department
	Other	
Subtotal		\$750.00
TOTAL		\$777,950.00

Section 9. STATEMENT OF PLAN IMPLEMENTATION

Significant events during Summit's 2013-2017 CFMP are as follows:

- Special emphasis has been placed on providing a diversity of replacement tree species which include a number of native species and native cultivars including: yellowwood, shadblow, red buds, hackberry, American hornbeam, hop hornbeam, red maple, black gum, dogwood, sweet gum and elm.
- The Shade Tree Advisory Committee has taken an active role in sponsoring informative tree-related sessions at least once a year in the evening at the Summit Public Library or Reeves-Reed Arboretum.
- The effect of the Ash Yellows and the Emerald Ash Borer has become evident on Summit's Ash Tree population and action has been taken to make the public aware of the problem and the need to replant.
- Black Knot has devastated Summit's Thundercloud Plum population.
- Tree removal permits for privately-owned trees increased to 246 in 2018 from 213 in 2013.
- The Division of Public Works purchased a trash loader in 2017 which has revolutionized brush and limb pickup and disposal post-storms.

- The only trees being treated to prevent EAB infestation include one specimen tree on the Village Green and approximately 30 Ash Trees on Springfield Avenue.

Recent storms occurring during the past two management periods have had a profound impact on Summit's tree population.

- On October 29, 2011, a freak snow storm hit Northern New Jersey causing severe damage to trees, especially those deciduous trees which had not lost their leaves. Oaks were particularly hard hit. Damage was mostly in the form of broken and hanging tree branches.
- On October 28, 2012, Hurricane Sandy struck New Jersey. With its 80-100 mph winds, Sandy left a wake of uprooted evergreen and deciduous trees throughout North Jersey. Massive power outages lasted for over a week in most municipalities.
- On March 7, 2018, a Nor'easter hit North Jersey leaving tree devastation in its path. With these events still fresh on our mind, Summit has had to rethink our future tree maintenance and tree replacement plans for this next management period.

The City's Community Forestry Management Plan addresses four areas, as noted in 9.1, 9.2, 9.3 and 9.4:

9.1 TREE INVENTORY / ASSESSMENT (*existing program to be continued*)

In 1999, a complete tree inventory of all City trees was conducted. The inventory was conducted by two college forestry students and supervised by a N.J. Licensed Tree Expert. The data collected was computerized using a Microsoft Access 97 software program known as *Tree Source*.

The 1999 inventory records the species, location, size, and condition of all trees within the public right-of-way and on publicly owned lands. Even though it is outdated, we are still using it.

The Summit Engineering Department recently had a LIDAR Survey conducted by Maser Consulting which provides a street view of all public right-of-way. It is hoped that a future tree inventory will be compatible with and complimentary to the LIDAR Survey.

If CSIP funding is available, an updated tree inventory will be conducted during this management period.

❖ Implementation Strategy:

- Update inventory regularly for mortality, replacement and maintenance priority.
- Conduct a complete new Street Tree Inventory within this management period if funding is available.
- Incorporate data specific to the Landmark Trees.
- Conduct an annual Windshield Tree Survey and utilize results to prioritize tree removals, tree pruning and tree replacements, etc.

9.2 HAZARD TREE IDENTIFICATION AND MANAGEMENT

A. Tree Removals (*existing program to be continued*)

The City of Summit has developed tree removal criteria (see addendum) for justification of its proactive removal program. With an aging street tree population of Norway Maple, Red Maple, and Silver Maple, decline and mortality is a serious concern, especially with the imminent demise of the City's Ash Tree population. The City began an accelerated Ash Tree removal program in 2018. Jersey Central Power and Light has been a great partner in this effort. Public opinion on one hand wishes to preserve or prolong as many trees as possible, yet safety issues necessitate many tree removals.

This has proven to be a delicate issue. The City has endeavored to maintain an open dialog with the public by notifying all residents before the scheduled removal of declining and potentially hazardous trees. Most large tree removals are contracted out. Emergency and small tree removals are conducted with in-house labor. The City is reasonably current with its tree removal responsibilities. Assuming a 1-3% annual tree mortality, the City can anticipate removing between 56-168 trees per year.

Tree removals are identified by customer service requests, personal observations by employees, and through our annual Windshield Tree Survey.

The 1999 Street Tree Inventory identified approximately 400 Ash Trees planted within City right-of-way. Over the last 20 years, many have fallen prey to Ash Yellows, and, most recently, Jersey Central Power and Light has been working with the City to proactively remove Ash Trees which they deem a threat to electric service in anticipation of the advancing Emerald Ash Borer attack and trees not being treated for EAB.

B. Root Problems (*existing program to be continued*)

These typically involve sewer lateral back-ups, surface roots, or sidewalk tripping hazards.

Since most of Summit's homes were constructed over 40 years ago, many of the sewer laterals are constructed of clay pipe. Tree roots will not invade a tight sewer lateral system such as PVC or cast iron. Residents who have experienced sewer backups frequently insist on the City removing perfectly healthy trees. In order to preserve these trees, the Department of Community Services recommends installing Root X (a foaming herbicide material) which prevents root infiltration into sewer laterals for a one-year period. Root X is available through private plumbing contractors.

Surface root problems in lawn areas have become an increasingly difficult problem to resolve. Residents are encouraged to plant ground cover in the general vicinity of tree trunks. On City-owned properties, the Public Works Division handles large exposed roots that present tripping hazards. The roots are shaved down or ground out, depending on site conditions and constraints.

Residents are fully responsible for sidewalk and driveway apron repair associated with tree roots, unless there is a City-sponsored road reconstruction project.

In Summit, all resold homes require the issuance of a Certificate of Occupancy. Sidewalk and other maintenance issues are addressed by Code Enforcement Officials at that time.

A significant goal for this plan will be to conduct a walking survey of City sidewalks. This will be accomplished with CSIP funding or, if funding is not available, possibly as an Eagle Scout Project or with summer interns.

The criteria to be used will be:

- 1) Identify sidewalks that have been uplifted more than three quarters of an inch.
- 2) Determine the course of action to abate the situation. Typical solutions include:
 - a) Remove the offending slab or slabs, shave the offending roots, and pour a new slab or slabs.
 - b) Preserve and reuse the offending slab, shave the offending roots, and re-set the original sidewalk slab in stone dust.
 - c) Plank the existing sidewalk over the offending roots. Most frequently used with blue stone slabs.
 - d) Offset the replacement sidewalk to minimize damage to the tree.
 - e) Remove the tree. Replace the sidewalk per City specifications.

Once a hazardous sidewalk survey has been compiled, the list will be turned over to the Parks, Recreation and Shade Tree Foreman, who will prescribe how the problem will be abated and will supervise the root pruning of any trees to be preserved. The list will also be given to the City Code Enforcement Officer who will put the respective property owner on notice and recommend a window of compliance.

C. Emergency and Storm Response (*existing program to be continued*)

In taking a proactive position on removing potentially hazardous trees, the City has reduced its emergency response frequency resulting in less overtime. The City is very capable of providing emergency and storm response with in-house labor. Cross-training has been provided to enable use of all Public Works personnel in the event of a tree-related emergency. In severe storm conditions, private contractors are brought in to assist with cleanup.

The following summarizes the City of Summit's policy on Emergency and Storm response, especially in regard to reducing tree related power outages:

- Ω Annually a Windshield Tree Survey is conducted of City right-of-way to identify trees in need of pruning or removal. This has been done for over 20 years. By proactively addressing these issues with in-house staff and outside contractors, we have minimized storm-related tree failure and reduced overtime.
- Ω Another significant step the City has taken in reducing tree-related power outages is our selection and utilization of compact tree replacement species beneath overhead wires. This

has been on-going for approximately 30 years. We have actually sped up this compact tree replacement by proactively removing and replacing over-mature trees which would be compromised in the City's annual road reconstruction projects.

- Ω The major contributing factor in the most recent power outages actually came from privately owned trees (not from City trees). In the past, the City has put private tree owners on notice to remove potentially hazardous trees as we became aware of them. We will step up this noticing procedure in the future.

In order for any tree to be deemed "hazardous," there must be both a tree defect and a potential target. Defects include crown dieback; excessive deadwood; lean, undermining, internal decay; and decline due to insects, disease, drought stress, lightning strikes, storm damage, grade change, or construction injury. Any structure, vehicle, person, or personal property within striking distance of a tree is a potential target. There is always a risk when a tree is within striking distance of a target, but we manage these risks by regular inspection and remedial action.

Private tree owners should have their trees inspected regularly by a New Jersey Licensed Tree Expert or International Society of Arboriculture Certified Arborist. Only full service tree companies employing NJ Licensed Tree Experts or ISA Certified Arborists should be used when preserving and maintaining trees. Other companies specializing in tree removal services are usually more cost effective when it is necessary to remove a tree. Generally speaking, all trees require some form of maintenance at least once within a 7-10 year period. Tree removal and maintenance is usually 10-20% cheaper during the winter months (December through March) when tree companies are usually less busy.

In terms of Summit's Tree Protection Ordinance, it actually seems to be working quite well. The fact that property owners have to think through the process of removing a tree, and are encouraged and sometimes required to replace trees, is a good thing. Rarely is an application denied.

❖ **Implementation Strategy**

- Conduct an annual hazardous tree survey in August to September using a NJ Licensed Tree Expert.
- Remove all trees warranting removal by April 1st of the following year.
- Maintain a budget, commensurate with the number of trees to be contractually removed.
- Continue promoting the use of Root X and other trenchless technology options in sewer lateral maintenance.
- Address lawn surface root issues on a case-by-case basis, either by property owners for private property, or by City labor for City properties.
- Evaluate the opportunities for a Citywide 10-year cyclic sidewalk inspection and repair program through the cooperation of the Code Administration, the Public Works and the Engineering Divisions.
- Maintain present budget and staffing for emergency and storm response.

9.3 TREE PLANTING – NEW AND EXISTING PROGRAMS

A. Existing Tree Planting Programs

All existing programs are to be continued. City typically maintains an annual budget for the replacement of street trees each year. Part of the reason for vacancies is that many residents ask not to have trees planted in the right-of-way in front of their homes. While the City could plant trees without the residents' approval, it strives to work with residents by pointing out the aesthetic and environmental benefits of street trees, and thereby gain the residents' voluntary assent. By continuing our program of planting site-appropriate trees, we hope to win many of these residents over.

A more aggressive public education program hopefully will result in an increased awareness of both the aesthetic and environmental benefits of tree-lined streets. With this heightened awareness, the City may avoid situations where trees are planted where they are not wanted.

The City received a \$9,000 CSIP Grant in 2002 and a \$15,000 CSIP Grant in 2006/2007. The City also received NJ Tree Foundation Planting Grants in 2006 and 2007. Summit annually participates in the Greening Union County program which supplements 50% of street tree planting costs.

Implementation Strategy

- Maintain a planting budget line item to provide for the annual replacement of at least 100 trees.
- Explore alternative grant and funding options.
- Develop a tree planting policy for the City to become fully stocked with street trees.
- Strive to plant replacement species that are appropriate for a given site paying special attention to the planting belt width and whether a potential conflict exists with overhead utilities.

B. New Tree Programs

- Consistent follow-up is needed to ensure that tree replacement requirements are fulfilled within one calendar year of a tree's removal, when tree removal permits are issued.
- Sponsor at least one community-wide, guest-speaker driven education program to promote the necessity of maintaining and increasing Summit's tree canopy coverage in regards to the replacement of trees that have been lost through natural mortality and storm damage, and in particular the Ash Yellows/Emerald Ash Borer crisis.
- Advocate for increasing Summit's tree planting budget to exceed a *no-net-loss* policy and help enforce the planting of more trees to exceed the number of trees being removed annually.
- Pursue the reduction of heat islands throughout the City through the City's land use boards.

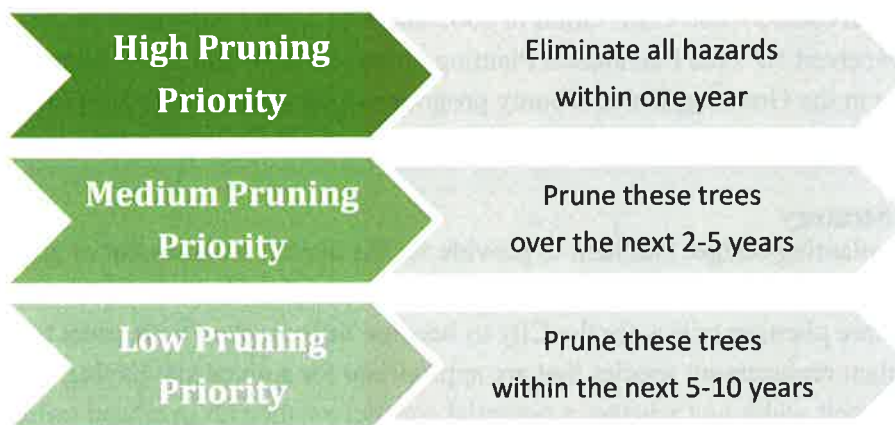
9.4 TREE MAINTENANCE AND CARE

A. Scheduled Tree Maintenance (*existing program to be continued*)

With the damage sustained in the recent storms, the City's Department of Community Services has fallen behind in maintaining a 10-year contractual pruning cycle on all trees within the public right-of-way and on public property. In-house crews rarely have the opportunity to perform the previously high level of preventive maintenance. The damage sustained in the recent storms would have been much greater had Summit not been proactive in our tree pruning schedule in the past.

National pruning standards have established 8-10 years as the ideal pruning cycle for street trees.

When a Windshield Tree Survey is conducted, we use the following pruning priorities:



In 1999, the Street Tree Inventory totaled 5,610 trees. To prune the entire tree population over a 10-year period requires pruning 561 of these trees per year. If the City is capable of pruning 200 trees per year in-house, 350 trees should be contractually pruned per year to meet our goal. At an average cost of \$275 per tree, \$96,000 per year should be budgeted. At the present, \$160,000 is proposed for the 2019 budget, which also includes contractual tree removals.

Additional funding through grants could potentially free up some of this money to address other unfulfilled tree-related goals.

B. Service Request Processing (*existing program to be continued*)

The Department of Community Services upgraded to an online platform available to both staff and the residents in 2016. The legacy program was not fully accessible to the public. Now with this system, the public and staff can report in issues and field employees get notified in real time on their mobile devices. This includes all public works activities, such as all service requests for tree work on City properties and in the right-of-way. The *Work Order Requests* remain in the computer as active requests until they are inspected and the request is resolved and the public can watch the progress of a request. There is also a mapping function to analyze incoming data.

Tree hazard and tree replacement inspections are made by the Parks and Shade Tree Supervisor or by a part-time Forester. Hazardous tree inspections and situations requiring additional expertise are customarily reserved for the Forester who is usually available at short notice, if necessary.

Upon making the inspection and recommendation for action, the work request is categorized by work category, i.e. Class II, III, or IV, pruning, tree removal, request for planting, stump removal, tree surgery, cabling, etc.

The Public Works Division is fully equipped to perform a full range of shade tree services. Presently most customer service requests, small tree removal, tree planting, and shade tree emergencies are handled in-house. Large tree removal is contracted out during November through March.

❖ **Implementation Strategy**

- Continue present efforts.
- Work with the Engineering Division to create and implement a map layer in GIS (Geographical Information System) as an asset management tool.
- Integrate tree inventory with customer service tracking program within the next two years using new request platform.
- Refine work management zones to further organize scheduled work and minimize travel time.
- Prune as many trees as possible in-house.
- Maintain contractual tree pruning at an appropriate level to supplement in-house pruning efforts to total 10% of the tree population per year.

Plan Implementation Timeline 2019-2023

The information provided is a living document, reviewed twice-annually by the Department of Community Services and the Shade Tree Advisory Committee to confirm stated goals and at the end of the year to verify progress on said goals.

EXISTING PROGRAMS TO BE CONTINUED	NEW PROGRAMS TO BE INITIATED**	2019	2020	2021	2022	2023
Tree Inventory / Assessment						
<ul style="list-style-type: none"> Conduct an annual Windshield Tree Survey and utilize this information to prioritize work load. 	<ul style="list-style-type: none"> Apply for CSIP funding in 2019 to conduct a new Tree Inventory in 2020. 	X				
	<ul style="list-style-type: none"> Update Landmark Tree Program & windshield approval/review process. 	X				
	<ul style="list-style-type: none"> Create a virtual arboretum of Landmark Trees on the City website. 	X				
	<ul style="list-style-type: none"> Integrate Tree Inventory with customer service tracking program. 			X		
	<ul style="list-style-type: none"> Conduct a complete new Street Tree Inventory within this management period if funding is available. 		X			
	<ul style="list-style-type: none"> Incorporate data specific to the Landmark Trees in the new Inventory. 		X			

Plan Implementation Timeline 2019-2023 (continued)

EXISTING PROGRAMS TO BE CONTINUED	NEW PROGRAMS TO BE INITIATED**	2019	2020	2021	2022	2023
Hazard Tree Identification and Management						
<ul style="list-style-type: none"> Promptly respond to service requests. 	<ul style="list-style-type: none"> Provide Hazard Tree Identification courses to DPW Personnel and send at least one employee per year. 	X	X	X	X	X
<ul style="list-style-type: none"> Remove all dead, diseased or dying trees identified in the Windshield Tree Survey within six months. 	<ul style="list-style-type: none"> Apply for CSIP funding to conduct a sidewalk survey of uplifted sidewalk conditions, or conduct one with volunteers or as an Eagle Scout Project. 	X	X	X	X	X
<ul style="list-style-type: none"> Prune all priority trees within nine months of identification. 	<ul style="list-style-type: none"> Prepare a fact sheet on storm damage prevention and after tree care. 		X			
<ul style="list-style-type: none"> Maintain existing tree root programs and communication with Zoning Inspectors regarding sidewalk maintenance. 						
<ul style="list-style-type: none"> Maintain existing emergency and storm response programs. 						

Plan Implementation Timeline 2019-2023 (continued)

EXISTING PROGRAMS TO BE CONTINUED	NEW PROGRAMS TO BE INITIATED**	2019	2020	2021	2022	2023
Hazard Tree Identification and Management (continued)						
<ul style="list-style-type: none"> Upgrade equipment as necessary. 						
<ul style="list-style-type: none"> Conduct an annual Hazardous Tree Survey. 						
<ul style="list-style-type: none"> Remove all trees warranting removal by April 1st of the following year. 						
<ul style="list-style-type: none"> Maintain a budget commensurate with the number of trees to be contractually removed. 						
<ul style="list-style-type: none"> Continue promoting the use of Root X and other trenchless technology options in sewer lateral maintenance. 						
<ul style="list-style-type: none"> Address lawn surface root issues on a case-by-case basis, either by property owners for private property, or by City labor for City properties. 						

Plan Implementation Timeline 2019-2023 (continued)

EXISTING PROGRAMS TO BE CONTINUED	NEW PROGRAMS TO BE INITIATED**	2019	2020	2021	2022	2023
Tree Planting						
<ul style="list-style-type: none"> Maintain existing tree planting budget. 	<ul style="list-style-type: none"> Each year, seek CSIP, Union County, NJ Tree Foundation, and other matching grants. 	X	X	X	X	X
<ul style="list-style-type: none"> Contract out tree planting and installation. 	<ul style="list-style-type: none"> Intensify educational efforts to property owners to minimize tree planting refusals within the public right-of-way, and encourage tree planting on private property. 	X	X	X	X	X
<ul style="list-style-type: none"> Strive to plant replacement species that are appropriate for a given site, paying special attention to the planting belt width and whether a potential conflict exists with overhead utilities. 	<ul style="list-style-type: none"> Promote Summit Commemorative Tree Dedication Program within the park system. 	X	X	X	X	X
<ul style="list-style-type: none"> Utilize "Trees for New Jersey Streets," published by the New Jersey Shade Tree Federation, as our guide for street tree selection. 	<ul style="list-style-type: none"> Aggressively replace Ash Trees as they are removed. 	X	X	X	X	X

Plan Implementation Timeline 2019-2023 (continued)

EXISTING PROGRAMS TO BE CONTINUED	NEW PROGRAMS TO BE INITIATED**	2019	2020	2021	2022	2023
Tree Planting (continued)						
<ul style="list-style-type: none"> Strive to increase, or at least maintain, existing tree canopy. 	<ul style="list-style-type: none"> Investigate passing a Bamboo/Invasives Ordinance. 	X	X	X	X	X
Tree Maintenance and Care						
<ul style="list-style-type: none"> Maintain existing staffing and contractual budget. 	<ul style="list-style-type: none"> Seek CSIP Grants to supplement in-house and contractual tree pruning to supplement the City's 10-year rotational program cycle. 	X	X	X	X	X
<ul style="list-style-type: none"> Furnish tools and training for "Summit Suckers" for branch elevation of young trees. 	<ul style="list-style-type: none"> Be more proactive in maintenance of trees in parks. 	X	X	X	X	X
<ul style="list-style-type: none"> Stay current with service requests through in-house and contractual labor. 	<ul style="list-style-type: none"> Provide IPM Training for DPW employees, and be on alert for new problems arising. 	X	X	X	X	X
<ul style="list-style-type: none"> Provide special emphasis on the maintenance of trees in the downtown area. 	<ul style="list-style-type: none"> Be observant of possible Lantern Fly infestations. 	X	X	X	X	X

Plan Implementation Timeline 2019-2023 (continued)

EXISTING PROGRAMS TO BE CONTINUED	NEW PROGRAMS TO BE INITIATED**	2019	2020	2021	2022	2023
Tree Maintenance and Care (continued)						
▪ Continue inoculation of Ash Trees in Summit Downtown.						
▪ Prune as many trees as possible in-house.						
▪ Maintain contractual tree pruning at an appropriate level to supplement in-house pruning efforts to prune 10% of the tree population per year.						
Other						
▪ File an Annual Accomplishment Report.	Provide better enforcement of existing Tree Preservation Guidance in respect to re-planting requirements.	X	X	X	X	X
▪ Apply for Tree City, USA recertification.	Prepare monthly reports for the Shade Tree Advisory Committee covering Tree Removal Permit activity and requirements to replant.	X	X	X	X	X

Plan Implementation Timeline 2019-2023 (continued)

EXISTING PROGRAMS TO BE CONTINUED	NEW PROGRAMS TO BE INITIATED**	2019	2020	2021	2022	2023
Other (continued)						
	<ul style="list-style-type: none"> Provide at least one public educational outreach workshop or program annually. 	X	X	X	X	X
	<ul style="list-style-type: none"> Utilize Reeves-Reed Arboretum as a classroom. 	X	X	X	X	X
	<ul style="list-style-type: none"> Encourage homeowners to replant large shade trees on their own property. 	X	X	X	X	X
	<ul style="list-style-type: none"> Pursue extending municipal tree bid pricing to private property owners for tree replacement on private property. 	X	X	X	X	X
	<ul style="list-style-type: none"> Encourage greater Shade Tree Advisory Committee participation in Arbor Day Activities, Ordinance Review, including for private trees, Landmark & Commemorative Tree dedication program. 	X	X	X	X	X

Plan Implementation Timeline 2019-2023 (continued)

EXISTING PROGRAMS TO BE CONTINUED	NEW PROGRAMS TO BE INITIATED**	2019	2020	2021	2022	2023
Other (continued)						
	<ul style="list-style-type: none"> Provide appropriate training to Shade Tree Advisory Committee and personnel as it becomes available. 	X	X	X	X	X
	<ul style="list-style-type: none"> Help the Shade Tree Advisory Committee develop a stronger identity. 	X	X	X	X	X

***Goals to be pursued annually until attained.*

9.5 ACCOMPLISHMENT REPORT (*existing program to be continued*)

Since the year 2000, the Department of Community Services has prepared accurate summaries of all City shade tree accomplishments for the benefit of the Common Council. A comparison of subsequent annual reports with the goals of the Community Forestry Management Plan will enable the Common Council, City Administrator, Director of Community Services, Shade Tree Advisory Committee, and the Forester to evaluate actual performance against the goals and objectives.

This will help insure adequate funding and management for the future. The City Forester will conduct an annual hazardous tree survey, the results of which will be used to record trees marked for removal and trees recommended for pruning. A copy of the report will be submitted to the N.J. Forest Service as required under the Community Forestry Assistance Act.

❖ Implementation Strategy

- Conduct an annual review as outlined above.

Section 10. COMMUNITY STEWARDSHIP INCENTIVE PROGRAM (5 YEARS)

CSIP #1 TRAINING

Summit adequately provides training opportunities for its personnel and volunteers and is not seeking CSIP scholarships in this area at this time.

CSIP #2 COMMUNITY FORESTRY ORDINANCE ESTABLISHMENT

As Summit examines its existing ordinance in comparison with those of other municipalities, it may see a benefit for revisions that would strengthen its tree protective ordinances but and is not seeking CSIP scholarships in this area at this time.

CSIP #3 PUBLIC EDUCATION AND AWARENESS

The Department of Community Services possesses excellent skills in these areas with the newly added position of Chief Communications Officer from the last Five-Year Management Plan and is not seeking CSIP scholarships in this area at this time.

CSIP #4 ARBOR DAY

The City of Summit has an established annual Arbor Day Program and is not seeking CSIP scholarships in this area at this time.

CSIP #5 TREE INVENTORY

The City's 1999 inventory is obsolete. Funds are requested to update the inventory during this management period. See **Section 9.1** on pages 24-25 for information on Summit's Street Tree Inventory. You can also find information on the 1999 Inventory in **Section 3** on page 9, and in the **Appendix**.

CSIP #6 TREE HAZARD ASSESSMENT

Summit provides for training in recognizing tree-related hazards and is not seeking CSIP scholarships in this area at this time.

CSIP #7 STORM DAMAGE ASSESSMENT

A Windshield Tree Survey is conducted annually of all public right-of-way and most parks and Summit is not seeking CSIP scholarships in this area at this time.

CSIP #8 TREE MAINTENANCE AND REMOVALS

The City of Summit recognizes that it wants to improve in providing regularly scheduled pruning of street trees on a prescribed cycle. The City of Summit would seek any CSIP relief in this area. See **Section 9.4** on pages 30-32 for more information.

CSIP #9 INSECT AND DISEASE MANAGEMENT

Summit has pesticide certified employees and funds for integrated pest management training, materials and equipment. See **Section 6** on page 18 for additional information and Summit is not seeking CSIP scholarships in this area at this time.

CSIP #10 WILDFIRE PROTECTION

The likelihood of wildfire in the City of Summit is slight. The possibilities occur along the New Jersey Transit train lines, or in Union County Park lands abutting residential areas. As the City has a full-time Fire Department, it is very unlikely we would request a grant in this area.

CSIP #11 TREE PLANTING

The Department of Public Works' budget is particularly stretched at this time. CSIP funding toward tree planting would shorten our goal of reaching fully stocked status. See **Section 9.3** on pages 29-30 for more information.

CSIP #12 TREE RECYCLING

Wood chips generated from tree pruning and removal are utilized within our park system. The City pays for processing large tree waste at a state approved resource recovery facility. "Up-cycling" action that would turn downed trees into products like flooring, molding, cabinetry, furniture, and industrial products would be a possibility. Summit earns Sustainable Jersey credits from this action. Summit would likely fund this through capital funding and would not seek additional funds from the NJ Forest Service.

CSIP #13 SIDEWALK MAINTENANCE PROGRAM

Funding to hire summer interns to conduct a “walking” sidewalk survey of Summit’s 66 miles of right-of-way and also Union County and State right-of-way would be a great use of CSIP funding. The purpose of the survey would be to identify sidewalks raised more than three quarters of an inch by tree roots. This information would be turned over to the Zoning Officer for follow-up. See **Section 9.2B** on pages 26-27 for more information.

CSIP #14 STORM WATER MANAGEMENT

Stream bank stabilization and de-snagging of streams and drainage ditches, where City easements are present, would be a great application of CSIP funding. Upgrading of leaf collection and catch basin cleaning equipment would be another. The City presently funds these efforts through operational and capital budgets.

CSIP #15 OTHER

No other CSIP funding is needs have been identified at this time.

APPENDIX

- A) 1999 Tree Inventory – Significant Species by Percent of Total**
- B) Tree Removal Permits Issued for Private Property – 2007-2018**
- C) Grants Received by the City of Summit – 2002-2018**
- D) Annual Activity Summary – 2001-2018**
- E) Spring 2018 Windshield Tree Survey**
- F) Sample News Releases**
- G) Tree Ordinances**
- H) Tree Policies**
- I) Landmark Trees of Summit**
- J) Tree Dedication Program**
- K) ISA Guidelines**
- L) Sample Door Hanger – Parks and Shade Tree Unit, Public Works**

**1999 Tree Inventory
Significant Species by Percent of Total**

MAPLE	36.20%
Red	13.82%
Norway	10.67%
Sugar	6.07%
Silver	4.67%
OAK	24.91%
Pin	14.14%
Red	4.35%
White	3.82%
Black	1.82%
ASH	6.74%
LONDON PLANE	2.80%
LINDEN	2.69%
DOGWOOD	2.42%
CHERRY	1.89%
YELLOW POPLAR	1.86%
ELM	1.77%
CRABAPPLE	1.57%
PEAR	1.52%

NOTE: It will be interesting to see how these percentages have changed once a new Street Tree Inventory is conducted.

Tree Removal Permits Issued for Private Property

YEAR	PERMITS ISSUED
2018.....	246
2017.....	241
2016.....	179
2015.....	201
2014.....	229
2013.....	213
2012.....	209
2011.....	250
2010.....	153
2009.....	173
2008.....	175
2007.....	166

Grants Received by the City of Summit

2018	Greening Union County	\$10,800	
2018	Green Communities Grant	\$3,000	
2017	Greening Union County	\$7,800	
2017	CSIP Tree Maintenance Grant	\$25,000	
2016	Greening Union County	\$9,000	
2015	Greening Union County	\$7,250	
2014	Greening Union County	\$6,875	
2013	Greening Union County	\$6,250	
2012	Green Communities Grant	\$2,250	
2012	Greening Union County	\$7,000	
2011	Greening Union County	\$5,000	
2010	BSF Grant used to contractually remove large trees	\$9,000	
2009	Greening Union County 50% match	\$10,000	
2008	New Jersey Tree Foundation – 75 trees installed in Fall	(\$20,000 value)	
2007-2008	Greening Union County	\$10,000	
2007	New Jersey Tree Foundation – 75 trees installed in Spring....	(\$20,000 value)	
2006	New Jersey Tree Foundation – 75 trees installed in Fall	(\$20,000 value)	
2006	Greening Union County – Planted 40 trees in Fall, 50% match	\$3,890	
2006	Community Stewardship Incentive Program Grant	\$15,000	
			with a \$6,150 City Match to prune 110 street trees
2006	Cool Cities Tree Planting Grant	\$15,000	
			with a \$14,700 City Match to plant 100 street trees
2006	Green Communities Grant to re-write a 5 year Community Forestry Management Plan	\$3,000	
2002	C.S.I.P. Grant obtained to plant trees	\$9,000	

Total Grants Received 2002 – 2018 is \$225,115

Annual Activity Summary (2001 – 2018)

YEAR	A C T I V I T Y				
	TREES REMOVED	TREES PLANTED	TREES PRUNED	TOTAL BUDGET	CUSTOMER SERVICE REQUESTS RESPONDED TO
2001	150	350	500	\$471,100	
2002	24	35 (drought)	75	\$480,000	
2003	42	27	116	\$455,800	
2004	82	205	557	\$465,350	
2005	67	134	205	\$502,302*	S.T.A.C. created
2006	121	164 + 150 NJTF	117	\$873,403*	418
2007	135	186	174	\$894,281	465
2008	124	168	159	\$386,675	474
2009	145	44	150	\$329,958	447
2010	130	64	138	\$412,875	518
2011	147	50	187	\$460,387	722
2012	131	70	231	\$883,600**	729
2013	133	70	231	\$767,236	499
2014	68	52	76	\$767,236	482
2015	181	90	209	\$773,916	688
2016	179	78	—	\$651,183	267
2017	127	84	117	\$747,594	309
2018	124	122	268	\$725,924	669
TOTALS	2,110	2,143	3,510		6,687

- **117.22 average trees removed annually**
- **119.06 average trees planted annually**
- **206.47 average trees pruned annually**

**Reflects combined Shade Tree and Parks Departments – 11 total employees*

***Includes overtime for Hurricane Sandy cleanup*

CITY OF SUMMIT

PARTIAL WINDSHIELD TREE SURVEY FOLLOWING THE SNOW STORM 3/7/18

CONDUCTED BY JOHN LINSON - 3/20/18

NJ LICENSED TREE EXPERT #198

TREE REMOVALS

ADDRESS	POSITION	DIAMETER/SPECIES	COMMENTS
MAPLE STREET @ WELLS FARGO DRIVE THROUGH		18" PIN OAK	
129 MAPLE STREET	3	15" RED MAPLE	
141 MAPLE STREET		13" ASH	
OPPOSITE 90 LARNED RD		14" NORWAY MAPLE IN PARK	
42 LAUREL AVE		32" LONDON PLANE	
19 MYRTLE AVE ON LAUREL AVE		26" PIN OAK	NEED SOME JCP&L ASSISTANCE
46 ASHLAND RD ON LAUREL AVE		22" NORWAY MAPLE	
? LARNED RD		26" X 26" ASH	
MEMORIAL FIELD (CLEARVIEW DRIVE AREA)		(2) SMALL DEAD TREES	
120 ASHLAND RD ON COLONY CT		25" WHITE OAK	
135 PINE GROVE RD		23" X 22" X 18" ?	C3P OR REMOVE
27 JOANNA WAY (PRIVATE)		25" PIN OAK	PRIVATE TREE
5 LINCOLN AVE		17" PEAR	
49 NORWOOD AVE		25" RED MAPLE	
OPP. 47 NORWOOD AVE		25" RED MAPLE	
22 SHERMAN AVE	1	22" SUGAR MAPLE	
52 HAWTHORNE PL		24" NORWAY MAPLE	
CK SURVEY FOR 123 BEECHWOOD RD		36" PIN OAK	

TREE REMOVALS

ADDRESS	POSITION	DIAMETER/SPECIES	COMMENTS
131 TULIP ST		36" LONDON PLANE	
UNION COUNTY PARKS		30" PIN OAK	
19 GREENBRIAR DR		30" WHITE OAK	
3 DRUM HILL RD	1	10" ASH	
3 DRUM HILL RD	2	22" ASH	
DRUM HILL RD & MOUNTAIN AVE		19" ASH	AT STOP SIGN
281 SUMMIT AVE ON HILL CREST AVE		38" SCARLET OAK	
144 HILL CREST AVE	1	16" X 16" RED MAPLE	
144 HILL CREST AVE	3	13" X 12" RED MAPLE	
FERNWOCK ON RIDGE ROAD		20" ROCK MAPLE	NEAR POLE #JC2907
11 BEACON RD	2	18" BLACK LOCUST	
11 BEACON RD	3	19" ASH	(BAD BASE)
18 BADEAU AVE		30" BLACK LOCUST	NEXT TO POLE JC 2304
74 BELLEVUE AVE		36" YELLOW POPLAR	3 PHASE PRIMARY
28 BELLEVUE AVE (JC 2244)		32" ASH	POSSIBLE REMOVAL. CHECK AFTER BUD BREAK 2016, 2 PHASE
22 LLEWELYN PLACE	1	25" WHITE PINE	
45 LENOX RD	4	18" ?	
59 LENOX RD	2	19" PIN OAK	
1 WENTWORTH PL ON GLENDALE RD	1	13" WHITE PINE	
21 ROBINHOOD ROAD	1	8" HORNBEAM	
133 HOBART RD		8" RED MAPLE	
113 HOBART AVE		30" X 30" X 30" YELLOW POPLAR	

TREE REMOVALS

ADDRESS	POSITION	DIAMETER/SPECIES	COMMENTS
106 HOBART AVE		36" SILVER MAPLE	
27" WALDRON AVE	2	17" NORWAY MAPLE	
11 LENOX RD ON PROSPECT HILL RD	1	26" NORWAY MAPLE	
9 PROSPECT HILL RD	1	9" RED MAPLE	
9 PROSPECT HILL RD	2	17" SOPHORA	
17 HUNTLEY RD ON DAYTON RD		16" X 17" PIN OAK	
WILLOW RD		SEVERAL SMALL DEAD TREES	AGAINST PSE&G PROPERTY
44 PLAIN ST		18" RED MAPLE	
47 IRIS RD ON MIELE PL	1	4" PEAR	
67 RIVER RD ON LEWIS AVENUE		36" PIN OAK	
16 LEWIS AVE		18" PIN OAK	JCP&L REMOVE
14 GREENFIELD		18" RED MAPLE	
OPPOSITE 137 BUTLER PARKWAY		DEAD ASH TREES	
OPPOSITE 91 BUTLER PARKWAY @ CARTER HOUSE		24" X 24" RED OAK	
OPPOSITE 71 BUTLER PARKWAY		30" ASH	
15 HARTLEY RD	1	8" X 8" RED MAPLE	
25 BRAINERD RD		25" PIN OAK	
240 WOODLAND AVE	3	22" PIN OAK	
150 WOODLAND AVE	3	22" PIN OAK	
8 WOODCROFT RD		40" SCARLET OAK	
WOODLAND AVE & HILLCREST AVE ISLAND		10" CHERRY	
21 HICKORY		38" SCARLET OAK	

TREE REMOVALS

ADDRESS	POSITION	DIAMETER/SPECIES	COMMENTS
80 CANOE BROOK PKWY	1	24" PIN OAK	
38 CANOE BROOK PKWY IN ISLAND		4" CHERRY	
17 WALLACE RD		6" YELLOWWOOD	
2 ASHWOOD AVE		4" MAPLE	
BACKDOOR OF SCHEPPE ON PARK AVE		4" MAPLE	
34 PARK AVE		STUMP	
42 SHUNPIKE RD	2	34" ASH	
OPPOSITE 42 SHUNPIKE RD (OPPOSITE PRINCETON TERR. CELANESE)		20" X 16" X 12" ASH	
95 ORCHARD ST		8" MAPLE	UNION COUNTY
5 CHAPEL ST		17" RED MAPLE	
51 PINE GROVE ON BLACKBURN RD	2	26" RED MAPLE	
51 PINE GROVE ON BLACKBURN RD	3	33" RED MAPLE	
135 PINE GROVE RD		20" X 18" X 18" ASH	
BEEKMAN WILSON SCHOOL EXIT DRIVEWAY		26" WILD CHERRY (NEAR LEYLAND CYPRESS HEDGE)	
151 COLONIAL DR		4" RED MAPLE	
2 HARVEY CT	3	32" SWEET GUM	
OPPOSITE 26-28 RISK AVE		10" ASH (ORANGE TAPE)	
26-28 RISK AVE		17" NORWAY MAPLE	
68 OAKLAND PL		17" BEECH	
OAKLAND PL - LITTLE HOUSE COVERED WITH IVY BY BROOK HEADWALL		13" ELM	

TREE REMOVALS

ADDRESS	POSITION	DIAMETER/SPECIES	COMMENTS
16 OAKLAND PL	2	28" NORWAY MAPLE (SPLIT TRUNK)	ASAP
12 OAKLAND PL	1	38" SILVER MAPLE (HOLLOW)	
25 LINDEN PL	1	20" LINDEN	
60 LINDEN PL		24" PIN OAK (DEAD)	
MEMORIAL FIELD BY TENNIS COURTS		36" PIN OAK	
MEMORIAL FIELD BY TENNIS COURTS		48" WHITE OAK	
MEMORIAL FIELD CLUMP OF TREES BY 100 ASHLAND RD		18" HICKORY	YELLOW TAPE
233 MOUNTAIN AVE		30" ASH	UNION COUNTY - C3P OR REMOVE
81 ELM ST		21" NORWAY MAPLE	
ELM ST BETWEEN PARKING SPACE 16 AND CHURCH DRIVEWAY		17" RED MAPLE	
2 ASHWOOD AVE		4" CHERRY	R/R
2 OR 4? ASHWOOD AVE			
WINDHORST LIQUORS ASHWOOD AVE		33" PIN OAK	
30 HUGHES PL ON BALTUSROL PL		20" ASH	
24 PEARL ST		17" NORWAY MAPLE	
VAN DYKE ST	1	9" NORWAY MAPLE	
VAN DYKE ST	2	24" NORWAY MAPLE	SPAN GUY TO POLE #41942
19 RUSSELL PLACE	1	2" DEAD TREE	R/R
MORRIS CT. @ REC CENTER		17" X 22" NORWAY MAPLE	
MORRIS AVE ON MORRIS CT		20" PIN OAK	ORANGE TAPE, JCP&L ASSISTANCE

CITY OF SUMMIT

PARTIAL WINDSHIELD TREE SURVEY FOLLOWING THE SNOW STORM 3/7/18

CONDUCTED BY JOHN LINSON - 3/20/18

NJ LICENSED TREE EXPERT #198

CLASS II PRUNING

ADDRESS	POSITION	DIAMETER/SPECIES	COMMENTS
KENT PLACE BLVD	3	10" CRABAPPLE	
74 KENT PLACE BLVD		8" RED MAPLE	HANGER
80 KENT PLACE BLVD		10" RED MAPLE	HANGER
84 KENT PLACE BLVD		13" NORWAY MAPLE	REPAIR STORM DAMAGE
93 KENT PLACE BLVD		3" PEAR	HANGER
92 KENT PLACE BLVD		17" RED MAPLE	REPAIR STORM DAMAGE
93 KENT PLACE BLVD		15" RED MAPLE	REPAIR STORM DAMAGE
95 KENT PLACE BLVD		4" PEAR	ROUND OVER
100 KENT PLACE BLVD		17" RED MAPLE	REPAIR STORM DAMAGE
130 KENT PLACE BLVD		18" RED MAPLE	REPAIR STORM DAMAGE
SUMMIT HIGH SCHOOL		7" ASH	REMOVE
144 KENT PLACE BLVD		9" ELM	REPAIR STORM DAMAGE
122 KENT PLACE BLVD		10" RED MAPLE (STICK)	REMOVE
178 KENT PLACE BLVD		8" PEAR	ROUND IT OVER
189 KENT PLACE BLVD		17" RED MAPLE	HANGERS & DEADWEED
TAN HOUSE		14" RED MAPLE	HANGERS
BLUE HOUSE 201 OR 203 KENT PLACE BLVD		9" RED MAPLE	REMOVE
224 KENT PLACE BLVD		17" RED MAPLE	HANGERS
226 KENT PLACE BLVD		8" PLUM WITH BLACK KNOT	REMOVE

CLASS II PRUNING

ADDRESS	POSITION	DIAMETER/SPECIES	COMMENTS
223 KENT PLACE BLVD		30" PIN OAK	HANGERS
227 KENT PLACE BLVD		9" ZEL KOVA	HANGERS
244 KENT PLACE BLVD		6" PLUM WITH BLACK KNOT	REMOVE
GRAY HOUSE 250 KENT PLACE BLVD		18" RED MAPLE	HANGERS
252 KENT PLACE BLVD		20" RED MAPLE	HANGERS
LIGHT GRAY HOUSE 254 KENT PLACE BLVD		17" RED MAPLE	HANGERS
264 KENT PLACE BLVD	2	8" RED MAPLE	REMOVE
270 KENT PLACE BLVD		30" ELM	HANGERS
284 KENT PLACE BLVD	2	33" PIN OAK	HANGER & DEADWOOD
284 KENT PLACE BLVD	1	17" NORWAY MAPLE	HANGER & DEADWOOD
LAST HOUSE ON EVEN SIDE	3	38" LONDON PLACE	DEADWOOD
	2	16" RED MAPLE	REPAIR STORM DAMAGE
	1	9" RED MAPLE	HANGERS
16 WEST END AVE		26" SILVER MAPLE	REMOVE
20 WEST END AVE		36" SILVER MAPLE	REPAIR STORM DAMAGE
24 WEST END AVE		16" SUGAR MAPLE	DEADWOOD
14 PASSAIC AVE ON WEST END AVE		23" PIN OAK	HANGERS
32 HARVEY DRIVE		26" RED MAPLE	HANGERS
118 PASSAIC AVE ON HARVEY DRIVE		19" PIN OAK	HANGERS
24 LAFAYETTE AVE		4" CHERRY	REMOVE
18 LAFAYETTE AVE		12" SHINGLE OAK	HANGERS
10 LAFAYETTE AVE		16" ASH	REMOVE
1 LINDEN AVE		16" RED MAPLE	HANGERS

CLASS II PRUNING

ADDRESS	POSITION	DIAMETER/SPECIES	COMMENTS
15 LINCOLN AVE		4" BEECH	REPAIR STORM DAMAGE
65 LINCOLN AVE		25" PIN OAK	CRACKED BRANCH OVER ROAD
18 LOWELL AVE		PRIVATE TREE	NEEDS PRUNING
154 COLONIAL ROAD		8" PLUM (BLACK KNOT)	REMOVE
COLONIAL ROAD (CUL-D-SAC)		7" NORWAY MAPLE	REMOVE
8 DUNNDER DR	1	18" ASH	REMOVE
132 WEST END AVE		CLUMP SILVER MAPLE	HANGERS
126 WEST END AVE	2	5" PLUM (BLACK KNOT)	REMOVE
118 WEST END AVE		19" X 17" RED MAPLE	REPLAIN DAMAGE STORM
85 WEST END AVE		10" PLUM (BLACK KNOT)	REMOVE
	1	12" X 12" RED MAPLE	REMOVE
	2	21" RED MAPLE	REPAIR STORM DAMAGE
51 WEST END AVE	2	32" PIN OAK	HANGERS
	1	19" RED MAPLE	HANGERS
49 WEST END AVE		26" PIN OAK	HANGERS & REPAIR STORM DAMAGE
48 WEST END AVE		30" PIN OAK	REPAIR STORM DAMAGE
47 WEST END AVE		9" RED MAPLE	REMOVE
63 PASSAIC AVE ON WEST END AVE		30" RED MAPLE	HANGERS
9A & B EDGAR ST		26" PIN OAK	THOROUGHLY PRUNE
10 EDGAR ST		8" MAPLE	REMOVE VINES
15 EDGAR ST		32" PIN OAK	REMOVE (SHELF FUNGUS)
17 EDGAR ST		21" RED MAPLE	HANGER & DEADWOOD
19 DENNIS PLACE		CLUMPY CHERRY	PRUNE

CLASS II PRUNING

ADDRESS	POSITION	DIAMETER/SPECIES	COMMENTS
30 WEAVER ST		4" TREE	HANGERS
9 AUDREY ST		PEAR	ROUND OVERS
31 AUDREY ST		16" X 16" RED MAPLE	HANGERS
17 LEWIS AVE		36" PIN OAK	DEADWOOD & HANGERS
9 LEWIS AVE		15" RED MAPLE	REPAIR STORM DAMAGE
MIELE PL (BROADWAY DINER)		3" X 3" CRABAPPLE	PRUNE
15 MIELE PL		33" PIN OAK	HANGERS & DEADWOOD
19 MIELE PL		32" PIN OAK	HANGERS & DEADWOOD
29 MIELE PL		33" PIN OAK	HANGERS & DEADWOOD
43 MIELE PL		30" PIN OAK	HANGERS & DEADWOOD
50 MIELE PL		33" PIN OAK	HANGERS & DEADWOOD
80 PROSPECT ST		8"	ROUND OVER & REPAIR STORM DAMAGE
69 PROSPECT ST		23" NORWAY MAPLE	REPAIR STORM DAMAGE
BETWEEN 55 & 69 PROSPECT ST		18" RED MAPLE	REPAIR STORM DAMAGE
45 TULIP ST ON PROSPECT ST		22" ASH	REMOVE
49 TULIP ST		4" SHAD BLOW	REMOVE
OPPOSITE 40-42 PROSPECT ST		18" NORWAY MAPLE	REMOVE
CONNECTION PROSPECT ST BY PARKING LOT		17" RED MAPLE	HANGERS
76 PROSPECT ON BLACKBURN RD		15" NORWAY MAPLE	REMOVE ASAP (HELD UP BY CABLE & TELEPHONE WIRES)
ROOSEVELT SCHOOL - ROOSEVELT WAY & PARK AVE		32" PIN OAK	REMOVE
180 WOODLAND AVE	2	11" ELM	REPAIR STORM DAMAGE

CLASS II PRUNING

ADDRESS	POSITION	DIAMETER/SPECIES	COMMENTS
188 WOODLAND AVE		8" ELM	REPAIR STORM DAMAGE
232 WOODLAND AVE		30" PIN OAK	HANGERS
25 WALLACE RD	1	20" RED MAPLE	HANGERS
	2	9" RED MAPLE	HANGERS
37 WALLACE RD		18" ASH	HANGERS
61 CANOE BROOK PWKY ON IRIS	3	38" PIN OAK	REPAIR STORM DAMAGE & DEADWOOD
	4	33" PIN OAK	REPAIR STORM DAMAGE & DEADWOOD
	2	24" PIN OAK	REPAIR STORM DAMAGE & DEADWOOD
248 WOODLAND AVE	2	22" RED MAPLE	HANGERS
	3	20" RED MAPLE	HANGERS
277 WOODLAND AVE	1	33" PIN OAK	REPAIR STORM DAMAGE
279 WOODLAND AVE		33" PIN OAK	REPAIR STORM DAMAGE & DEADWOOD
43 CANOE BROOK PKWY		14" ASH	REMOVE
95 CANOE BROOK PKWY		30" PIN OAK	DEADWOOD & HANGERS
PRIVATE TREE 29 WOODLAND AVE CORNER OF BEVERLY			HANGER OVER STOP SIGN
22 BEDFORD RD		32" RED OAK	2 LARGE STUMBS
21 BEVERLY RD - NEXT TO DRIVEWAY		7" RED MAPLE	HANGER
TATLOCK PARK ALONG BUTLER PKWAY			MANY HANGERS
23 GREENFIELD AVE		30" PIN OAK	DEADWOOD & HANGERS
27 GREENFIELD AVE		25" PIN OAK	DEADWOOD & HANGERS
BUTLER PKWY ROAD FRONTAGE ALONG MARTIN'S BROOK PARK			CLEAN UP DEBRIS
11 SHERIDAN RD		24" PIN OAK	HANGERS
2 SHERIDAN RD		30" PIN OAK	REPAIR STORM DAMAGE

CLASS II PRUNING

ADDRESS	POSITION	DIAMETER/SPECIES	COMMENTS
ORATORY PREP PARKING LOT ON SCHOOL AVE		32" PIN OAK	REMOVE
		20" PIN OAK	REPAIR STORM DAMAGE
16 BEVERLY RD ON SCHOOL AVE	2	16" PIN OAK	REPAIR STORM DAMAGE
KAREN WAY ISLAND		21" HONEY LOCUST	HANGER
31 KAREN WAY		10" RED MAPLE	HANGER
14 WADE DR		24" RED MAPLE	HANGER
9 WADE DR			ANY TREES REQUIRE STORM DAMAGE REPAIR
	1	25" PIN OAK	SHOULD BE REMOVED - CLOSEST TO ROAD
23 BRIAN RD		25" PIN OAK	REPAIR STORM DAMAGE
26 BRIAN RD		30" PIN OAK	REPAIR STORM DAMAGE
27 BRIAN RD		36" PIN OAK	REPAIR STORM DAMAGE
28 BRIAN RD		32" PIN OAK	REPAIR STORM DAMAGE
34 FAY PLACE	1	MULTI-STEM	REPAIR STORM DAMAGE
	2		WAS A REMOVAL
22 FAY PLACE		25" RED MAPLE	REPAIR STORM DAMAGE
OPPOSITE 6 WOODCROFT PLACE		12" X 18" RED MAPLE	HANGERS
17 SHERMAN AVE		5" PEAR	REMOVE
23 SHERMAN AVE		18" PIN OAK	HANGERS
10 SHERMAN AVE		9" PLUM (BLACK KNOT)	REMOVE
9 SHERMAN AVE		22" SUGAR MAPLE	HANGERS
4 SHERMAN AVE	1	18" SUGAR MAPLE	REMOVE
1 SHERMAN AVE	2	18" SUGAR MAPLE	PRUNE
B.O.E. SHERMAN AVE		22" SUGAR MAPLE	SAFETY PRUNE

CLASS II PRUNING

ADDRESS	POSITION	DIAMETER/SPECIES	COMMENTS
49 NORWOOD AVE		22" RED MAPLE	UNSAFE - REMOVE ASAP
		SINGLE PHASE PRIMARY	
7 LORRAINE RD		8" ASH	REMOVE
11 LORRAINE PLACE	1	17" RED MAPLE	REPAIR STORM DAMAGE
	2	19" SUGAR MAPLE	SAFETY PRUNE
13 LORRAINE PLACE - BE SURE TO NOTIFY PROPERTY OWNERS BEFORE REMOVING	2	25" SUGAR MAPLE	REMOVE
	1	25" SUGAR MAPLE	SAFETY PRUNE
15 NORWOOD AVE - KENT COURT		13" SUGAR MAPLE	REMOVE - DYING
1 NORWOOD AVE		11" PIN OAK	REMOVE - DEAD
OPPOSITE 32 LOCUST DR AT SUMMIT HOTEL PARKING LOT		32" LINDEN	PRUNE
11 BLACKBURN RD ON BROOK CT	1	25" PIN OAK	SAFETY PRUNE
	2	24" PIN OAK	SAFETY PRUNE
(ELECTRIC PRIMARY)	3	20" PIN OAK	SAFETY PRUNE
	4	25" PIN OAK	SAFETY PRUNE
15 BROOK CT		32" SYCAMORE	SAFETY PRUNE
1 EUCLID AVE		6" SHADBLOW	HANGER
11 EUCLID AVE		3" SHADBLOW	REMOVE

CITY OF SUMMIT

PARTIAL WINDSHIELD TREE SURVEY FOLLOWING THE SNOW STORM 3/7/18

CONDUCTED BY JOHN LINSON - 3/20/18

NJ LICENSED TREE EXPERT #198

CLASS III PRUNING (SAFETY PRUNING)

ADDRESS	POSITION	DIAMETER/SPECIES	COMMENTS
ON MIDDLE AVE & 61 SPRINGFIELD AVE		23" ASH	
MAPLE ST AT Y		(2) 26" PIN OAK	
40 LAUREL AVE	1	28" LONDON PLANE	
40 LAUREL AVE	2	32" LONDON PLANE	
36 LAUREL AVE		32" LONDON PLANE	
68 LINDEN PL			
LARNED RD @ OAK KNOLL SCHOOL		30" WHITE OAK	
8 PARKVIEW		28" RED OAK	
2 MIDLAND TERR @ STOP SIGN	2	32" PIN OAK	ASAP
27 GLEN OAKS AVE		26" PIN OAK	
14 GLEN OAKS AVE		26" HORSECHESTNUT	
11 STONY HILL CT		32" SCARLET OAK	A CITY TREE? APPROX 12' FROM CURB. STREET ABOUT 20' WIDE
65 MADISON AVE	2	24" NORWAY MAPLE	
9 SHERMAN AVE		17" SUGAR MAPLE	
22 SHERMAN AVE	2	24" SUGAR MAPLE	
13 LORRAINE PL	2	26" SUGAR MAPLE	
46 LAUREL AVE		36" LONDON PLANE	
129 TULIP ST		36" LONDON PLANE	
132 TULIP ST		24" LONDON PLANE	

CLASS III PRUNING (SAFETY PRUNING)

ADDRESS	POSITION	DIAMETER/SPECIES	COMMENTS
133 TULIP ST		36" LONDON PLANE	
134 TULIP ST		36" LONDON PLANE	
135 TULIP ST		36" LONDON PLANE	
CORNER OF TULIP ST & 145 MOUNTAIN AVE		33" RED OAK	
UNION COUNTY PARKS		24" WHITE OAK	OPPOSITE 145-149 OAKE RIDGE AVE
220 OAK RIDGE AVE		32" SCARLET OAK	
244 OAK RIDGE AVE		42" SCARLET OAK	PRIVATE - DEADWOOD OVER ROAD
DRUID HILL RD & DEVON RD ISLAND		36" SCARLET OAK	
DRUID HILL RD & DEVON RD ISLAND		36" SCARLET OAK	
144 HILLCREST AVE	1	26" RED MAPLE	
144 HILLCREST AVE	2	30" RED MAPLE	
144 HILLCREST AVE	3	21" RED MAPLE	
305 SUMMIT AVE ON WOODMERE AVE		40" YELLOW POPLAR	
164 HILLCREST AVE	2	54" WHITE OAK	
162 HILLCREST AVE	1	26" WHITE OAK	
HOBART AVE ON BEACON RD		23" RED MAPLE	
11 BEACON RD	1 & 2	28" BLACK GUM	
238 SUMMIT AVE	1	34" YELLOW POPLAR	
238 SUMMIT AVE	3	25" RED OAK	SINGLE PHASE PRIMARY
157 BELLEVUE AVE		23" SUGAR MAPLE	
60 HILLCREST AVE		32" WHITE OAK	
6 LLEWELYN PL	1	17" PIN OAK	

CLASS III PRUNING (SAFETY PRUNING)

ADDRESS	POSITION	DIAMETER/SPECIES	COMMENTS
123 BEECHWOOD RD		32" RED OAK	
19 LONDONDERRY WAY	1	26" PIN OAK	
17 LONDONDERRY WAY	1	13" PIN OAK	
32 LEXON RD	1	22" PIN OAK	
CEDRIC RD AND TEMPLAR WAY ISLAND		8" X 8" X 6" JUP. MAPLE	
6 HOBART AVE		7" SUGAR MAPLE	
6 IRVING PL		17" NORWAY MAPLE	
8 IRVING PL		16" NORWAY MAPLE	
43 FRANKLIN PL ON RUTHVEN PL		29" WHITE OAK	ASAP
33 PROSPECT HILL RD		36" RED OAK	
26 CLARK AVE	1	21" NORWAY MAPLE	ASAP
21 HUNTLEY RD		30" PIN OAK	
17 HUNTLEY RD		32" PIN OAK	
22 HUNTLEY RD		29" PIN OAK	
19 MIELE PL		25" PIN OAK	
29 MIELE PL		30" PIN OAK	
13 LEWIS AVE		36" ELM	
17 LEWIS AVE		36" PIN OAK	
21 LEWIS AVE		36" PIN OAK	
23 AUBREY ST		9" ZELKOVA	
23 GREENFIELD AVE		27" PIN OAK	
147 CANOE BROOK PKWY ON BEVERLY		26" WHITE OAK	

CLASS III PRUNING (SAFETY PRUNING)

ADDRESS	POSITION	DIAMETER/SPECIES	COMMENTS
35 HARTLEY RD ON CORNER		25" PIN OAK	
282 WOODLAND AVE		25" PIN OAK	
232 WOODLAND AVE		30" PIN OAK	
226 WOODLAND AVE		21" PIN OAK	
55 BEVERLY RD ON HICKOR RD		30" WHITE OAK	SEVER VINES
90 CANOE BROOK PKWY		30" PIN OAK	
13 WALLACE RD	2	32" ASH	
15 WADE DR	2	33" PIN OAK	
44 WADE DR		25" PIN OAK	
KAREN WAY	1	22" PIN OAK	
11 BLACKBURN RD ON BROOK PL	4	28" PIN OAK	
19 BLACKBURN PL		32" ASH	
26 CROMWELL PKWY		27" WHITE OAK	
116 BEEKMAN RD ON BEEKMAN TERR		24" SUGAR MAPLE	
29 BEEKMAN RD		10" RED MAPLE	
100 WEST END AVE		32" PIN OAK	ASAP
99 WEST END AVE		32" PIN OAK	ASAP
96 WEST END AVE		32" PIN OAK	ASAP
OAKLAND PL CORNER OF LARNED - PROSPECT AVE ADDRESS - LAST TREE		19" PIN OAK	
2 MANOR HILL RD ON ASHLAND		18" PIN OAK	
JUNIOR HIGH PARKING LOT		ALL TREES	SAFETY PRUNE AS NECESSARY
17 SAYRE ST		20" WALNUT	ASAP

CLASS III PRUNING (SAFETY PRUNING)

ADDRESS	POSITION	DIAMETER/SPECIES	COMMENTS
12 SAYRE ST		6" PLUM	
20 WILLIAM ST		30" PIN OAK	
24 ASCOT WAY		24" PIN OAK	
HUGHES PL & BALTUSROL RD		38" ASH	
18 MORRIS CT		27" PIN OAK	

CITY OF SUMMIT

PARTIAL WINDSHIELD TREE SURVEY FOLLOWING THE SNOW STORM 3/7/18

CONDUCTED BY JOHN LINSON - 3/20/18

NJ LICENSED TREE EXPERT #198

BRANCH ELEVATION (CLASS IV PRUNING)

ADDRESS	POSITION	DIAMETER/SPECIES	COMMENTS
37 MIDDLE AVE	1	18" RED MAPLE	
37 MIDDLE AVE	2	24" RED MAPLE	
18 PINE RIDGE DR		7" HONEY LOCUST	
11 JOANNA WAY		6" SWAMP WHITE OAK	
17 JOANNA WAY		5" HONEY LOCUST	
18 JOANNA WAY		5" HONEY LOCUST	
18 DALE DR	1	13" RED MAPLE	
18 DALE DR	2	12" NORWAY MAPLE	
18 DALE DR	4	17" NORWAY MAPLE	
26 LOWELL AVE		5" HORSECHESTNUT	
18 LOWELL AVE		5" HORSECHESTNUT	
24 WEAVER ST		5" LILAC	
2 LORRAINE RD	1	2" HEDGE MAPLE	
2 LORRAINE RD	2	2" HEDGE MAPLE	
88 TULIP ST		6" HORNBEAM	
232 OAK RIDGE AVE		8" HONEY LOCUST	
24 GREENBRIAR DR		8" HACKBERRY	
4 STACIE CT		20" SWEET GUM	
18 HIGHLAND DR ON ROTARY DR		5" CRABAPPLE	(VISIBILITY PROBLEM)

BRANCH ELEVATION (CLASS IV PRUNING)

ADDRESS	POSITION	DIAMETER/SPECIES	COMMENTS
ESSEX & 124			CLEAR STOP SIGN
25 ESSEX RD		(2) 4" CANADA RED CHERRY	
214 EDGEWOOD RD	2	7" HONEY LOCUST	
16 EDGEWOOD RD	3	8" HEDGE MAPLE	
53 EDGEWOOD RD		SMOKE BUSH	
31 LENOX RD		4" CANADA RED CHERRY	
62 HOBART AVE	3	7" HACKBERRY	
HOBART & SPRINGFIELD		CLEAR BOTH STOP SIGNS	
13 DEBARRY PL		3" PEAR	
24 DEBARRY PL		3" TREE	TURKISH FILBERT
34 HOBART AVE		13" RED MAPLE	
31 HOBART AVE		17" RED MAPLE	
29 FRANKLIN PL		4" HORNBEAM	
CHRISTIAN SCIENCE CHURCH ON RUTHVEN PL	1	4" YELLOWWOOD	
24 RUTHVEN PL		14" PEAR	
18 RUTHVEN PL		7" CANADA RED CHERRY	
16 RUTHVEN PL		8" YELLOWWOOD	
28 WALDRON AVE	2	8" GINKO	
56 WHITTREDGE RD		7" ASH	
90 WHITTREDGE RD	2	14" RED MAPLE	
99 WHITTREDGE RD		17" RED MAPLE	
105 WHITTREDGE RD		6" ELM	

BRANCH ELEVATION (CLASS IV PRUNING)

ADDRESS	POSITION	DIAMETER/SPECIES	COMMENTS
121 WHITTREDGE RD		9" RED MAPLE	
130 WHITTREDGE RD	1	14" RED MAPLE	
130 WHITTREDGE RD	2	10" HONEY LOCUST	
130 WHITTREDGE RD	3	21" RED MAPLE	
6 CLARK AVE	1	3" GOLDEN RAIN	
6 CLARK AVE	2	2" HEDGE MAPLE	
25 CLARK ST		3" GOLDEN RAIN	
40 CLARK ST		6" ENGLISH OAK	
43 CLARK ST		6" CHERRY	
49 HUNTLY RD		12" X 10" X 8" ASH	
41 PLAIN ST		3" HONEY LOCUST	
39 PLAIN ST		2" PEAR	
34 PLAIN ST		3" LILAC	
21 BEVERLY RD		4" HORSECHESTNUT	
OPPOSITE #24 SHERIDAN RD		CLEAR STREET LIGHT BT 1122	
20 SHERIDAN RD	1	14" PIN OAK	
20 SHERIDAN RD	2	8" HONEY LOCUST	
HARTLY RD & BUTLER PKWY		CLEAR STOP SIGN	
18 BRAINERD RD		8" SWAMP WHITE OAK	
150 WOODLAND RD	2	15" PIN OAK	
161 CANOE BROOK PKWY		7" HACKLEBERRY	
116 CANOE BROOK PKWY		5" HORSECHESTNUT	

BRANCH ELEVATION (CLASS IV PRUNING)

ADDRESS	POSITION	DIAMETER/SPECIES	COMMENTS
ROSELAND ON CANOE BROOK PKWY		10" ASH	
24 CANOE BROOK PKWY		5" YELLOWWOOD	
14 CANOE BROOK PKWY		4" HACKLEBERRY	ASAP
60 PARK AVE		6" ELM	
21 NORTH ST		6" CHERRY	
18 NORTH ST		4" HONEY LOCUST	
17 NORTH ST	1	4" RED MAPLE	
17 NORTH ST	2	4" RED MAPLE	
1 EDISON DR		17" RED MAPLE	
6 EDISON DR		12" SUGAR MAPLE	
5 EDISON DR		6" RED MAPLE	
29 EDISON DR		9" CHERRY	
31 EDISON DR		8" PLUM	
22 HARVARD ST	1	6" CHERRY	
42 SHUNPIKE		8" HACKLEBERRY	
15 WASHINGTON AVE		ELEVATE ALL STREET TREES WASHINGTON AVE AND GROVE ST	
10 DIVISION AVE		7" PEAR	
SUNSET DR		ELEVATE ENTIRE STREET AS NECESSARY	
22 VALLEY VIEW DR		8" ASH	
46 VALLEY VIEW DR		8" CHERRY	
51 VALLEY VIEW DR	1	7" LINDEN	
51 VALLEY VIEW DR	2	7" LINDEN	

BRANCH ELEVATION (CLASS IV PRUNING)

ADDRESS	POSITION	DIAMETER/SPECIES	COMMENTS
THE GRAND HOTEL ON BLACKBURN RD		MULBERRY	ELEVATE - CLEAR STOP SIGN
9 DORSET LN		3" NORWAY MAPLE	
OAKLEY AVE		ELEVATE ENTIRE STREET AS NEEDED	
BEEKMAN RD		ELEVATE ENTIRE LENGTH OF STREET AS NEEDED	
NEW PROVIDENCE AVE AT END OF WEST END AVE		3" MAPLE	
46 OAKLAND PL		7" HONEY LOCUST	
22 OAKLAND PL		5" CHERRY	
18 ASHLAND RD		8" HORNBEAM	
34 ASHLAND RD		7" PLUM	
22 SAYRE ST		5" HORSECHESTNUT	
26 ASHWOOD AVE	1	16" SWEEM GUM	
45 ASHWOOD AVE		7" PLUM	
51 ASHWOOD AVE		5" CHERRY	
69 ASHWOOD AVE		5" CHERRY	
118 ASHWOOD AVE		7" HACKLEBERRY	
15 MALVERN DR	1	6" HONEY LOCUST	
PEARL ST		ELEVATE TREES AS NECESSARY	
FAITOUTE CT		ELEVATE SOUTHEAST SIDE OF STREET	
RUSSELL PL		ELEVATE ENTIRE STREET AS NECESSARY	

THE CITY OF SUMMIT

N E W J E R S E Y

CITY HALL 512 SPRINGFIELD AVENUE SUMMIT, NJ 07901

News Release

For immediate release

Summit Mayor: Nora G. Radest (908) 273-6400

City Administrator: Michael F. Rogers (908) 522-3600

Media Contact: Amy Cairns (908) 277-9418

Ash Borer Beetle Infestation Forces Removal of 80 Ash Trees in Summit

SUMMIT, N.J., February 14, 2019 – The City of Summit is responding to an infestation of the Emerald Ash Borer beetle by partnering with JCP&L to remove approximately 80 Ash trees located in city and Union County right-of-ways, and on private property. Removal of Ash trees will begin on Monday, February 18 and continue over the next few months until the threat from the invasive species of beetle has been successfully eradicated.

The Emerald Ash Borer was first found in New Jersey in the spring of 2014 in Somerset County, and since then, has been caught in eight counties throughout the state, including Union County in 2018. The beetle has been identified in trees in Summit prompting the removal of 80 of an estimated 350 Ash trees to control the spread of the predatory insect.

"While a significant number of municipalities are choosing to remove all Ash trees as a way to eliminate the Emerald Ash Borer beetle threat, Summit is choosing to treat some trees with pesticides rather than remove our entire Ash Inventory," explains City Forester John Linson. "Since it would be impossible to eradicate the Emerald Ash Borer with treatment alone, proactively removing Ash trees in partnership with JCP&L is a required next step to control the invasive species infestation."

Linson continues: "The City of Summit is urging homeowners to take steps to protect healthy Ash trees on private property by contracting with state-certified pesticide applicators to treat trees prior to signs of Emerald Ash Borer beetle infestation. Once infested, removal of affected trees is strongly recommended."

According to Linson, signs of infestation include canopy dieback beginning at the top of the tree and progressing until the tree is bare, sprouts growing from the roots and trunk, split bark with an S-shaped indentation, D-shaped exit holes and increased woodpecker activity.

For more information on how to protect ash trees please visit www.emeraldashborer.nj.gov. Residents are encouraged to report signs of the Emerald Ash Borer beetle to the NJ Department of Agriculture at 609-406-6939.

For more information on Ash tree treatment and removal in Summit, contact the Department of Community Services at 908-273-6404.

###

**List of Trees Recommended for Planting in the City of Summit
by Shade Tree Advisory Committee of the City of Summit**

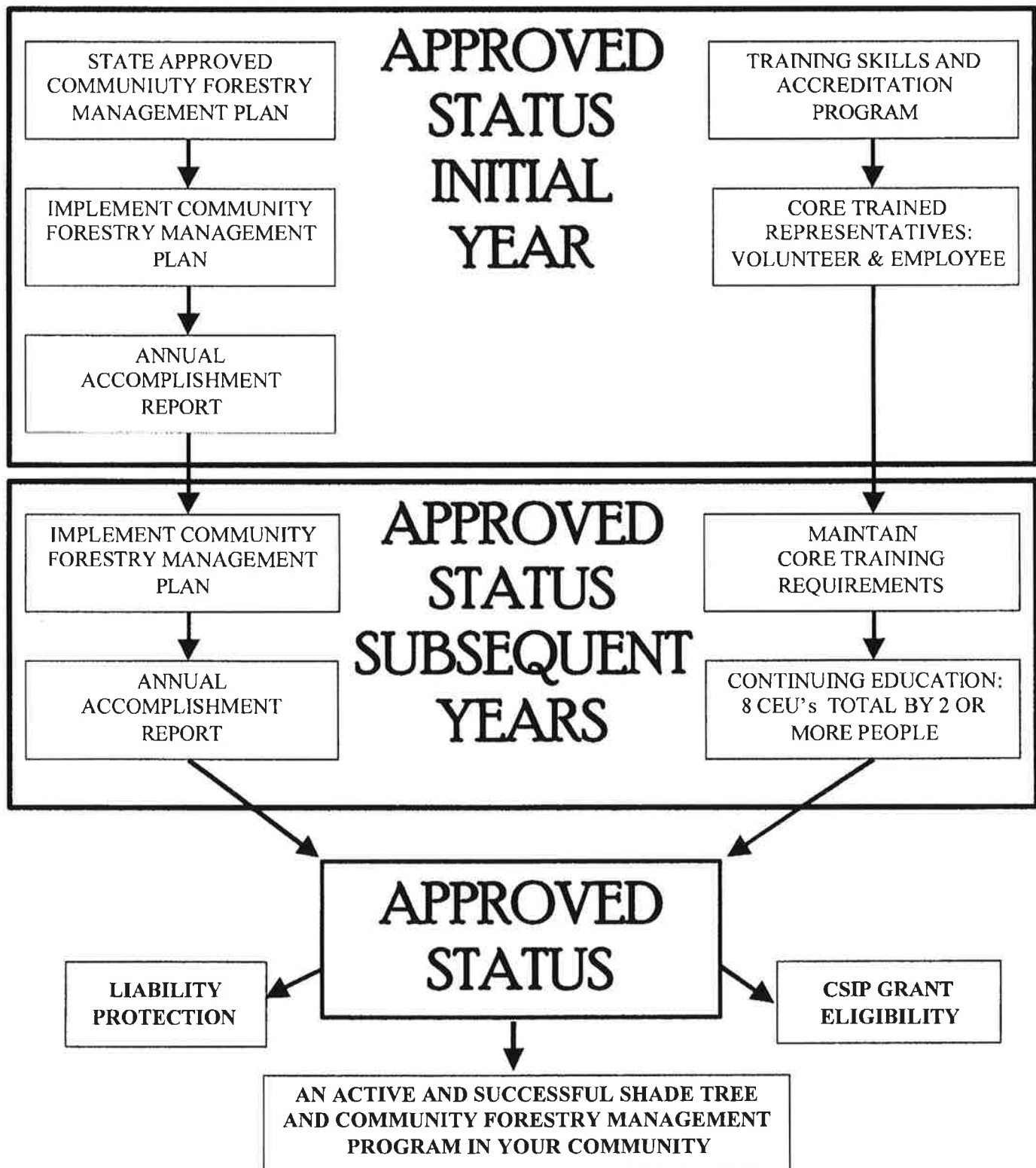
The following trees are suitable for Summit residents to plant within the City of Summit.

- **American Hornbeam**
- **Dogwood**
- **White Oak**
- **Swamp White Oak**
- **Hackberry**
- **Littleleaf Linden**
- **Red Maples**
- **Sugar Maple**
- **Northern White Cedar** (evergreen)
- **Yellow Wood**
- **River Birch**
- **American Holly** (not near streets)
- **Black Gum** (great fall color)
- **Sweet Bay Magnolia**
- **Service Berry**

Where possible, the Shade Tree Advisory Committee has taken care to identify native trees that are especially adapted to our local soil, rainfall, wind and temperature conditions. These trees are also widely available in our area and are less susceptible to insect damage and other diseases. Consequently, these trees are expected to thrive in Summit with a minimal amount of maintenance. The City of Summit already has planted many of these species and will continue to plant them in its annual efforts to revitalize its urban forest.

Summit residents are reminded that trees that are brought to Summit from other parts of the United States (or other parts of the world) may cause unintended harm. This may occur when these trees introduce pests or diseases to which they have become resistant. In addition, some of these trees become invasive and crowd out native species.

NEW JERSEY SHADE TREE AND COMMUNITY FORESTRY ASSISTANCE ACT



DEPT COMMUNITY SERVICES
SUMMIT, NJ 07901
RECEIVED

OCT 06 2006

By TC
Approved _____
BY _____

Ordinance #:	06-2728
Introduction Date:	9/6/06 (Wed.)
Hearing Date:	10/3/06
Passage Date:	10/3/06

AN ORDINANCE AMENDING THE CODE, CHAPTER XXIX, PROTECTION OF TREES, as amended by Resolution Nos. 31941 and 31967 (Updating provisions for the protection of Private Trees)

BE IT ORDAINED BY THE COMMON COUNCIL OF THE CITY OF SUMMIT as follows:

Section 1. That the current ordinance as described in CHAPTER XXIX, PROTECTION OF TREES, shall be amended and supplemented to read in its entirety as follows:

CHAPTER XXIX - PROTECTION OF TREES

PREAMBLE: PURPOSE AND INTENT

Trees increase property values, conserve energy costs, cleanse the air, and contribute to the overall aesthetics of, and quality of life in, the City of Summit. In addition, the City of Summit recognizes that there is a strong relationship between the integrity of the City and the region's water resources, the development on steep slopes, tree removal, soil disturbance, storm water management and the general use of land resources. Therefore, the appropriate management of these resources is an important health, safety and general welfare concern.

This ordinance is designed to regulate and control the removal and, where practical, maintenance of the trees within the City. The City strives to preserve the maximum number of trees, promote the preservation of existing trees, and to provide a plan for the replacement of trees, particularly trees located on the rear, side and front yard Perimeter of individual properties. This will provide a benefit to adjacent property owners, a buffer and screen against noise and pollution, preserve and enhance the City's physical and aesthetic appearance, and generally promote the public health and welfare.

29-1 DEFINITIONS.

Building shall mean a combination of materials to form a construction adapted to permanent, temporary or continuous occupancy and having a roof.

City Forester shall mean a person appointed by the City to supervise and insure the conservation, protection and care of trees, shrubs, and soil within the City, and having otherwise the scope of duties and authority provided for herein. It shall also include those persons working under his or her supervision or authorized by him or her to carry out the duties and obligations assigned to him or her.

City Shrub shall mean a shrub located on land owned by the City, the Board of Education, the Board of Recreation, or other municipal body, or which is otherwise located on a street, highway, right-of-way, or parkway.

City Tree shall mean a tree located on land owned by the City, the Board of Education, the Board of Recreation, or other municipal body, or which is located on a street, highway, right-of-way, or parkway.

DBH (Diameter at Breast Height): "DBH" shall mean the diameter of tree trunks at a height of four (4) feet 6 inches from the finished grade at the base of the tree.

Dripline shall mean the circular area surrounding a tree, the radius of which area shall be the distance from the trunk of the tree to the outermost branches of the tree.

Emergency shall mean an event or events, disease or condition which has damaged or destroyed a tree or trees, such that the continued presence of such damaged or destroyed tree or trees imminently threatens life or property in proximity thereto.

Enforcement Officer shall mean the Director of Community Services, the Superintendent of Public Works, the City Forester, the Superintendent of Parks, or his/her duly authorized representative.

Hazardous Tree shall mean any tree that receives an 11 or 12 rating under the International Society of Arboricultural rating method set forth in *Hazard Tree Analysis for Urban Areas* (copies of this manual are available for reference from the City Forester) and may also mean any tree that receives a 9 or 10 rating, at the discretion of the City Forester.

Landmark Tree shall mean any tree designated and identified as such by the City Forester or any other person designated by the Summit Common Council, in each case pursuant to the standards set forth in this ordinance, and affirmed by resolution of the Summit Common Council.

Management Plan shall mean a plan for the management of timbered or forested lands developed by the New Jersey Department of Environmental Protection, Bureau of Forestry, or similar State or Federal agency of the City Forester.

Perimeter shall mean the area of an individual property that is outside the building envelope and outside the permitted areas for accessory structures as defined and regulated in the Development Regulation Ordinances of Summit in effect from time to time.

Private Tree shall mean any tree other than a City Tree as defined above.

Protective Barrier shall mean a barrier constructed to protect the root system or trunk of a tree from damage.

Replacement Tree shall mean a certified tree, properly balled and marked with a label indicating genus, species and variety, and acceptable to the City Forester.

Root System shall mean tree roots within the Dripline.

Significant Tree shall mean (i) any healthy woody perennial plant (species found commonly in Summit are: tulip, oak, maple, beech, linden, sweet gum, black gum, locust and hickory) having a 16 inch DBH; or (ii) any Landmark Tree. The diameter of trees composed of multiple stems or trunks shall be the sum total of each individual stem or trunk at DBH.

Specimen Tree shall mean a tree of at least 12 inches DBH that possesses distinctive form, size or age, and that has good aesthetic value, and including, without limitation, small hardwoods such as dogwood, and redbud.

Tree shall mean any deciduous or coniferous species which (i) reaches a typical mature height of twelve feet (12') or more, and (ii) has a typical DBH of 4 inches or greater at maturity.

Tree Removal Permit shall mean a license issued by the Department of Community Services to remove or destroy a tree or trees.

Tree Replacement Cost shall mean the average of the "bid" costs for all types of trees purchased by the City of Summit in its most recent planting program.

29-2 CITY TREES.

- a. No City Tree shall be removed except by the Department of Community Services or by the owner of the tree after receipt of a valid Tree Removal Permit issued by the Department of Community Services.
- b. To the extent that any City Tree is located on land not owned in fee by the City, the Department of Community Services shall issue a Tree Removal Permit for the removal of such tree if, but only if:
 1. Such tree is so diseased or so infested as to be a danger to other trees in the City or surrounding communities, or
 2. Such tree is dead, or its presence would cause hardship or endanger the public, the property owner or an adjoining property owner, or
 3. Such tree does not contribute to the health, safety, economy or general welfare of the City.
- c. The Department of Community Services shall remove a City Tree that is located on land not owned in fee by the City only after providing thirty (30) days notice of such intended removal to the owner of such land (or if such owner cannot be found within the City, then within thirty-five (35) days after the mailing of such notice, postage prepaid, to the post office address of such owner or owners if the same can be ascertained). If within thirty (30) days (or thirty-five (35) days thereafter), such land owner objects and requests a hearing before the Department of Community Services as to such removal, a hearing shall be held before such

tree is removed. Such tree may thereafter be removed by the Department of Community Services provided that the City Forester finds:

1. Such tree is so diseased or so infested as to be a danger to other trees in the City or surrounding communities, or
 2. Such tree is dead, or its presence would cause hardship or endanger the public, the property owner, or an adjoining property owner, or
- d. The City Forester shall not plant a Tree on any street, highway, right-of-way, or parkway, where the land on which the tree is to be planted is not owned in fee by the City, without the consent of the owner of such land.

e. ***Maintenance of the City Trees and City Shrubs.***

1. All City Trees and City Shrubs located on property owned by the City shall be maintained solely by the Department of Community Services.
2. All City Trees and City Shrubs located on property not owned by the City, including trees and shrubs located on a street, highway, right-of-way, or parkway, shall be maintained by the owner of the property on which the trees or shrubs are located; provided, however, that the City Forester may cause such City Trees and shrubs to be trimmed or removed as part of any on-going program of tree and shrub maintenance in any area of the City where such program is being conducted for the health, safety, economy or general welfare of the City.
3. All City Trees and City Shrubs not included within the provisions of paragraphs 1 and 2 hereof and not located on property owned by the City, but which property is owned by some other person including, but not limited to, the Board of Education, Board of Recreation or some other municipal body, may be maintained by the Department of Community Services as is required for the public welfare.
4. If any City Tree or City Shrub requires trimming in order not to constitute a danger to the public or adjoining property owners, the owner of the land upon which such City Tree or City Shrub is located shall, upon being notified in writing by the City Forester, trim or cause to be trimmed, such tree or shrub within thirty (30) days after such notification, or if such owner cannot be found within the City, then within thirty-five (35) days after the mailing of such notice, postage prepaid, to the post office address of such owner or owners, if the same can be ascertained.

29-3 PRIVATE TREES.

No person shall cut or remove, or cause or permit to be cut or removed, any Private Tree that is a Significant Tree within the City of Summit except in compliance with this Chapter 29.

- a. **Tree Removal Permit Required.** Subject to the exemptions listed in Section 29-6, no person shall cut or remove, or cause or permit to be cut or removed, any Private Tree that is a Significant Tree for any reason on any land within the Perimeter of their property within the City of Summit unless the person shall have first obtained a Tree

Removal Permit in accordance with the regulations and provisions of this Chapter; provided, however, that Significant Tree(s) may be removed without a validly issued Tree Removal Permit in the case of an Emergency Removal, as described in Section 29-8(c).

h. Standards for Issuing Tree Removal Permit.

1. Within ten (10) business days of receipt of an application for cutting or removal of trees, the City Forester shall inspect the site on which are located the Significant Tree(s) sought to be cut or removed and shall make an assessment of whether the proposed removal would constitute a significant change in the screening between existing or proposed buildings on contiguous lots.
2. No Tree Removal Permit shall be issued for the removal of a healthy Landmark Tree(s) that can be preserved through pruning, feeding, cabling, spraying, or other such means as the City Forester determines may be reasonably undertaken.
3. No Tree Removal Permit shall be issued without first being approved by the City Forester.

29-4 LANDMARK TREES.

- a. The City Forester upon request shall determine whether any tree qualifies as "Landmark Tree." A tree may qualify as a Landmark Tree if it meets one (1) or more of the following criteria:
 1. The tree species is rare.
 2. The tree is more than one hundred (100) years of age.
 3. The tree is of an abnormal height or has an abnormal trunk diameter or Dripline diameter for a tree of its species.
 4. The quality of the tree foliage is abnormal for a tree of its species.
 5. The location, shade value, fragrance, erosion control, aesthetic, features, or scenic enhancement of such tree is of especial importance to the City.
- b. All trees designated as Landmark Trees by the City Forester, shall be shown on an official City Map with appropriate code marks signifying each tree's designation, number, specie, age, size and other distinguishing characteristics for ready reference and periodic monitoring.
- c. If the owner or owners of the property on which a Landmark Tree is located consents thereto, the City may identify such tree as a Landmark Tree by the placement of a suitable marker thereon.
- d. If, and when, any Landmark Tree is removed, the City Forester shall arrange for the necessary changes to be made to the official Landmark Tree inventory records and City Map.

29-5 OTHER PROHIBITIONS AND REQUIREMENTS WITH RESPECT TO CITY TREES.

- a. It shall be unlawful to commit any of the following acts with respect to City Trees without the prior written permission of the City Forester.

1. Cut, prune, break, injure, alter or remove any tree; or cut, unduly disturb or interfere in any way with any root of a tree or trees.
 2. Spray any tree with a chemical.
 3. Fasten any rope, wire, sign, or other device to a tree or trees or to any guard about such a tree or trees.
 4. Install, remove or injure any guard or device placed to protect any trees.
 5. Close or obstruct any open spaces provided about the base of a tree or trees to permit the base of a tree or trees to permit the access of air, water and fertilizer to the roots of such tree or trees.
 6. String any wires or lines through a public park.
- b. The City Forester shall grant such written permission if the activity for which such permission is requested is in the public interest and is not likely to materially injure any City Tree.
 - c. Any and every person having or maintaining any electric, telephone, telegraph, or other wires or lines running through a public street or park, shall securely fasten and maintain such wires and lines in such a manner as will safeguard City Trees against any damage there from and shall make periodic adjustments whenever necessary to prevent damage to City Trees and City Shrubs.
 - d. When necessary to prune or remove any City Tree(s), along a public street, any person having any wires or lines running through or along the public street shall temporarily remove, or cause to be removed, such wires or lines within five (5) business days after the serving upon the owner of the wires or lines or his agent, of a written notice from the City Forester.
 - e. Any person performing line clearance operations (tree trimming) or having line clearance operations performed by any other person or persons shall first obtain the written approval of the City Forester.
 - f. Any person or persons who cause damage to any City Tree(s) by machines, autos, etc. shall be held liable for damages to the tree or trees. Damages shall be corrected or repaired by the City and the liable person or persons billed for the damages.
 - g. No person shall move, or cause to be moved, any building or large object along any street without having first obtained a valid permit from the City Forester who, if he deems necessary, may require the person to furnish a bond or cash deposit in an amount sufficient to cover any damage to, or destruction of, City Trees on such street or streets as a result of such moving operations.
 - h. The provisions of this ordinance are not to be construed as requiring the City to maintain, replace or move any sidewalk not located on property owned by the City. Should such maintenance, replacement or moving be required to preserve or protect the health of any City Tree, the owner of the land upon which such tree or trees are located shall, upon being notified in writing by the City Clerk at the direction of the Common Council, maintain, replace or move such sidewalk in the manner directed by the Common Council within thirty (30) days after such notification, or if such owner

cannot be found within the City, then within thirty-five (35) days after the mailing of such notice, postage prepaid, to the post office address of such owner or owners, if the same can be ascertained.

- i. Whenever it shall become the duty of any such owner or owners to cut, trim, remove or destroy any City Tree or City Shrub or to maintain, replace or move any sidewalk under the requirements of this section, and the work as directed by the City Forester shall not have been done at the expiration of the time provided herein, or satisfactory explanation shall not have been presented for such failure, then the Common Council, upon presentation of a report in writing by the City Forester, may authorize such work to be performed under the direction of the City Forester and paid for out of the monies of the City to the credit of the City Forester. The cost of this work shall be certified by the City Forester to the person having charge of the collection of assessments in the City. Upon filing the certificate, the amount of the cost of such work shall be paid to the City by the property owner, and may be collected by the City in the manner provided by law.

29-6 EXEMPTIONS.

Any destruction or removal of trees, except Landmark Trees, shall be exempt from the provisions of this chapter if the trees sought for destruction or removal are:

- a. Growing on property actually being used as a nursery, garden center or orchard, or
- b. Removed in accordance with a "Management Plan" developed by a recognized State or Federal environmental protection authority, provided that a copy of such plan is filed with the Department of Community Services.
- c. Any tree located on publicly owned land and removed by the public agency or its representatives.
- d. Dead or diseased or Hazardous Trees upon certification by a New Jersey Certified Tree Expert.
- e. Any Private Tree that is not a Significant Tree.
- f. Trees subject to the Emergency Removal process described in [Section] 29-8 of this Chapter.

29-7 PROTECTION OF TREES.

- a. No person shall (a) operate, place or maintain within the Dripline of any Tree any machinery, equipment, heavy object, stone, rocks, cement, earth, soil, or other substance which may harmfully affect such Tree by unduly compressing the earth or otherwise impeding or preventing the access of water or air to the roots of such tree, or (b) excavate around or remove earth or soil from, or cause any water to flow upon, the roots of any Tree, except that if provisions of this section create any undue hardship in the appropriate use and enjoyment of property, the City Forester may waive in whole or part such provisions, but only to the extent absolutely necessary to alleviate such undue hardship.
- b. **Private Trees.** The following additional provisions shall apply to Private Trees:

1. Tree protection measures and the limit of disturbance line shown on the site plan or grading plan shall be provided in the field with snow fencing or other durable material and verified by the City Forester prior to soil disturbance.
2. Protective barriers shall not be supported by the plants / trees they are protecting, but shall be self-supporting. Barriers shall be four (4) feet high and shall last until construction is complete.
3. Chain link fence may be required for tree protection if warranted by site conditions and relative rarity of the plant.
4. Snow fencing used for tree protection shall be firmly secured along the Dripline but shall be no less than six (6) feet from the trunk.
5. The grade of land located within the Dripline shall not be lowered or raised unless compensated by welling or retaining wall methods; and in no event shall be permitted within the Dripline or within six (6) feet of any remaining trees, whichever is greater.
6. Any excavation within the Dripline, or within six (6) feet of the trunk of a remaining tree, whichever is greater, shall be done by airspade or hand-operated equipment.
7. Where a tree that has been noted for preservation is severely damaged and unable to survive, tree replacement shall occur as provided in the Tree Removal Permit Section.

29-8 APPLICATIONS FOR AND ISSUANCE OF TREE REMOVAL PERMIT.

- a. **Information Required; Issuing Agent.** Applications for a Tree Removal Permit for the removal or destruction of a tree or trees where required under this chapter, shall be made directly to the City Forester, and shall contain the name of the applicant, location of the property and plot as aforesaid, and in addition thereto, the purposes for which the application is being made, including but not limited to the following: clearing land for agricultural use, harvesting timber, fire protection, industrial use, private parks, scenic improvements, hard-ship, danger to adjacent properties, removal of diseased or damaged trees, transplanting or removal in a growing condition to other locations, installation of utilities or drainage of surface water.
- b. **Non-emergency Removal.** Within ten (10) business days after the submission of an application for a Tree Removal Permit for the removal of a tree or trees, the City Forester shall review the site and the application and either grant or deny the Tree Removal Permit, or extend for an additional ten (10) business days the period for review by the end of which he shall grant or deny the Tree Removal Permit. Failure of the City Forester to act within the aforesaid time shall be deemed approval of the application.
- c. **Emergency Removal.** Within five (5) business days following an Emergency, requiring immediate removal of a tree or trees for which a Tree Removal Permit from the City Forester is required under this section, written notice shall be given to the City Forester by the property owner, supported by sufficient evidence demonstrating

in form and content satisfactory to the City Forester that the removal meets the criteria of an emergency removal.

1. if such removal is determined to be an Emergency by a New Jersey Certified Tree Expert, and
2. the property owner removing, or causing the removal of, the Significant Tree(s) applies for a Tree Removal Permit within five (5) business days of initiating emergency tree removal and provides documentation from the New Jersey Certified Tree Expert that the removal was an Emergency.

29-9 FEES.

- a. **City Trees.** There shall be no fee charged for the issuance of a Tree Removal Permit.
- b. **Private Trees.** In connection with the application for a Tree Removal Permit, the applicant shall pay the fee identified below.
 1. For the removal of any Private Tree that is a Significant Tree and that is certified as dead, diseased or structurally unsound by a New Jersey Certified Tree Expert, no fee.
 2. For the removal of a Private Tree that is a Significant Tree and that is located within the allowable building area as defined by Development Regulation Ordinances of Summit in effect from time to time, no fee.
 3. For the removal of a Private Tree that is a Significant Tree that does not satisfy the conditions of 1 and 2 above, a non-refundable fee of \$25 per tree. In addition, the applicant shall be required to (i) replace on their property the Private Tree removed with a suitable Tree, as determined by the City Forester in his/her reasonable discretion, or (ii) in lieu of replacing the Private Tree, pay the Tree Replacement Cost to the City of Summit.
 4. Tree Removal Permit fees collected under this subsection shall be used to pay the City Forester's hourly fee to inspect tree(s) to be cut or removed in order to render his/her endorsement or rejection of a Tree Removal Permit. Tree Replacement Costs collected under this subsection shall be deposited into the Tree Dedication Fund of the City of Summit, and shall be used to purchase replacement Trees within the City of Summit.

29-10 APPEAL.

Any person aggrieved by the decision of the City Forester shall have the right to appeal such decision to the City of Summit's Shade Tree Advisory Committee. Such appeal shall be by written notice stating the reason(s) upon which the appeal is based, and filed with the Department of Community Services within fourteen (14) business days of the decision of the City Forester.

The Shade Tree Advisory Committee shall hear the matter, upon notice to the applicant, within forty-five (45) days after filing of the notice of appeal. The Shade Tree Advisory Committee may in its discretion and upon complete review of the application and after hearing the testimony of the City Forester, the applicant, and such other experts as may be appropriate, reverse, modify or affirm the aforesaid decision. The Shade Tree

Advisory Committee shall forward its recommendation to the Department of Community Services for final approval and/or determination.

29-11 ENFORCEMENT.

- a. The requirements of this chapter shall be enforced by the Enforcement Officer who shall seek such penalties as are provided in this chapter.
- b. The Enforcement Officer may order to be stopped forthwith any tree work or other activity which he believes is carried on in violation of any provision of this chapter. The order shall be issued in writing and a copy served upon any person engaged in such tree work or such other activity. If no such person is present upon the property, then the order shall be served upon the owner of the property in question. Thereafter, any further work shall comply with the terms and conditions of any Tree Removal Permit issued by the City Forester with respect to such property and the provisions of this chapter.

29-12 PENALTIES.

- a. A person violating, or causing to be violated, any of the provisions of this chapter including, but not limited to, any person cutting down or removing a City Tree or a Private Tree that is a Significant Tree without obtaining a valid Tree Removal Permit permitting such removal of the Tree(s) in accordance with this Chapter, (i) shall be required to obtain retroactively a Tree Removal Permit for the Trees already removed and to pay any fees or Tree Replacement Costs as required in Subsection 29-9(b)(3), and (ii) shall be subject to a fine in an amount equal to:
 - (i) the Tree Replacement Cost, **plus**
 - (ii) 10% of the Tree Replacement Cost, **multiplied by**
 - (iii) the sum of (x) the number of Trees improperly removed, and (y) one.
- b. If any significant tree is not properly protected during construction then the cost of a Replacement Tree will be put in escrow for 2 years. If the tree dies during these two years, then the escrow money will be used to replace the tree. If the tree does not die then the escrow money will be returned two years after the CO has been issued.

29-13 ANNUAL REPORT BY CITY FORESTER.

The City Forester shall make an annual report to the Common Council as to the Tree Removal Permits granted and refused by him in each calendar year pursuant to this chapter. Such report shall be supplied on or before March 31 of each year as to the preceding year.

Section 2. If any parts of this Ordinance are for any reason held to be invalid, such adjudication shall not affect the validity of the remaining portions of this Ordinance.

Section 3. All ordinances or parts of Ordinances, which are inconsistent herewith, are repealed, but only to the extent of the inconsistency.

Section 4. This Ordinance shall take effect immediately following its final passage, publication as required by law, and filing with the Union County Planning Board.

Dated: October 3, 2006

I, David L. Hughes, City Clerk of the City of Summit, do hereby certify that the foregoing ordinance was duly passed by the Common Council of said City at a regular meeting held on Tuesday evening, October 3, 2006.

Approved:

Mayor

City Clerk

CITY OF SUMMIT

TREE REMOVAL POLICY

The actual number of trees marked for removal fluctuates from year to year, but usually is between 1-2% of the total tree population. The presence of environmental stress such as a severe winter or drought or an insect or disease infestation can significantly increase tree mortality.

The Public Works Division recognizes *A Photographic Guide to the Evaluation of Hazard Trees in Urban Areas*, published by the International Society of Arboriculture, as its official standard identifying structural deficiencies in stress trees.

The City will conduct an annual evaluation of hazardous trees in the public right-of-way. In addition, trees are evaluated as a part of routine work, and through referrals from residents, property owners, and other city agencies and departments.

The following criteria are used in making tree removal determinations:

1. The tree is dead.
2. 20-30% of the tree crown has declined and it is aesthetically unattractive.
3. The tree has structural deficiencies.
4. The tree has been repeatedly cut back by utility line clearance crews, rendering it unattractive.
5. Sidewalk , driveway apron or curbing improvements necessitate the removal of an excessive amount of roots, thus making the tree unstable or bringing about its premature demise.
6. The presence of the tree in some way compromises Public health, safety or general welfare.

A notification letter is sent out to each property owner adjacent to a tree marked for removal. The letter advises them that the tree will be removed over the next few months and that they should call the Public Works Division if they have any questions regarding the removal or the schedule for a replacement tree.

**PROPOSED
CITY OF SUMMIT
TREE PLANTING POLICY**

The following criteria are used in tree planting and tree maintenance determinations.

A. Tree Planting:

- 1.) Wherever possible, tree removals will be replaced.
- 2.) It is recognized that promoting species diversity is a control for epidemics of insects and disease and that mono-culture planting be avoided.
- 3.) Such plant site constraints as planting belt width, overhead and underground utilities, sidewalks, curbs, soil and moisture conditions, setbacks, traffic visibility, spatial arrangement, signage, awnings etc. must be considered in all planting selections. The following spacing and location standards will be followed:
 - a) No planting within 35' of a stop sign
 - b) No planting within 25' of an intersection
 - c) No planting within 50' of another tree
 - d) No planting within 10' of an underground utility
 - e) No planting within 12' of a driveway apron or utility pole
 - f) Aggressive species exceeding 25' in height at maturity will not be planted under above ground utilities
 - g) Trees for NJ Streets published by NJ Shade Tree Federation will be the standard for determining suitability for planting belt widths.
- 4.) Wherever possible, replacement species will be selected to maintain the existing character of the neighborhood.
- 5.) All plantings conform to the American Association of Nurserymen's Planting Standards.
- 6.) Wherever possible, consideration will be given to residents' preferences in the species selection and planting location of replacement trees.
- 7.) When a resident specifically requests a replacement tree and the only possible planting location is the exact location of the previously removed tree, the following procedure will be followed:

- The stump will be ground out to the maximum possible depth;
- All the resulting woodchips will be removed;
- The resulting hole will be filled with topsoil prior to attempting to plant the replacement tree.

B. Tree Maintenance

- 1.) Residents will be provided with watering instructions for new plantings during the first year following installation.
- 2.) Life threatening insect and disease problems will be controlled as necessary.
- 3.) Biological or non-toxic pest control will be used wherever possible.
- 4.) Residential, commercial and municipal historic and specimen trees will be preserved wherever possible.
- 5.) An inventory of City street trees will be maintained for management purposes.
- 6.) Work will be scheduled by priority.
 - a) Top Priority will include the following:
 - The removal of potentially dangerous dead, dying, diseased or structurally weak trees or topping-out the same to make them safe.
 - The removal of large, dangerous, broken and/or hanging branches.
 - The removal of low branches that create a visibility, traffic or pedestrian hazard.
 - The removal of hazardous root conditions.
 - b) Medium Priority will include the following:
 - The pruning and removal of deadwood conditions.
 - Spraying for insect and disease problems.
 - The removal of sticks and stumps.
 - The pruning of branches interfering with street lights, above ground utilities, structures, etc..
 - c) Low Priority will include the following:

- ♦ Pruning for aesthetic reasons.
- ♦ Non-safety related tree removals, pruning & stump removals, etc.

CITY OF SUMMIT

NUISANCE TREE POLICY

Trees are a part of the infrastructure of our public right-of-way. Similar to asphalt paving, curbing, or storm or sanitary lines, the trees have maintenance costs and a limited life span.

Unlike other items of infrastructure, however, trees are alive. Sometimes, interference can occur between trees and other infrastructure components, especially if these components have structural or design deficiencies.

Similar to frost heaving, tree roots may displace sidewalk slabs and curbing. Tree roots may also intrude into sewer laterals through loose or open joints or other defects. Frequently, poor line-clearance activities by utility companies cause a tree to become unbalanced, aesthetically unpleasant, and possibly dangerous. In such situations, trees could be considered a nuisance.

It is the City's policy that it will remove trees from the public right-of-way only if they meet the following criteria:

- 1.) The tree is dead.
- 2.) 20-30% of the tree crown has declined and is aesthetically unattractive.
- 3.) The tree has structural deficiencies, including being out of balance and in danger of falling.
- 4.) The tree has been repeatedly cut back by utility clearance crews rendering it aesthetically unattractive.
- 5.) Sidewalk, driveway apron or curbing improvements necessitate the removal of an excessive amount of roots, thus making the tree unstable or bringing about its premature demise.
- 6.) The presence of the tree in some way compromises public health, safety or general welfare.

In some situations, property owners desire the removal of trees that are not dead, dying or unsafe. It is the City's policy that these requests will not be honored.

STANDARDS FOR THE INSTALLATION OF HOLIDAY LIGHTING IN CITY TREES

1. Only one contractor shall be permitted to install holiday lighting in City Trees.
2. There shall be a pre-construction meeting between the Parks and Shade Tree Supervisor and contractor prior to the installation of holiday lighting. The contractor shall regularly communicate with the Parks and Shade Tree Supervisor during the installation and removal of holiday lighting.

Provision shall be made to compensate the City for time expended supervising the installation and removal of holiday lighting from City Trees at the hourly rate of \$55/hour.

3. All lights shall be installed no earlier than November 1st. All installation must take place within a one week period.
4. No lighting strands may be tightly wrapped around trunks or branches. It is suggested that lighting strands be systematically attached to tree branches with plastic ties.
5. All lighting strands must be installed and removed with an aerial bucket truck, man-lift or free standing aerial device. No ladders or scaffolding are permitted to lean against City Trees.
6. All plastic ties used to secure lighting strands must be removed at the conclusion of the lighting display which shall be on or around January 12, 2009. It is recommended that lighting strands only be used for single season use to facilitate removal without damage to City Trees.

The Landmark Trees of Summit

(April 2, 2013)

Location	Species
95 Rotary Drive	White Oak
1 Pembroke Road	White Oak
27 Beekman Terrace	European Copper Beech
36 Beekman Terrace	European Copper Beech
100 Beekman Road	Black Oak
51 Harvey Drive	White Oak
154 Colonial Road	White Oak
8 Weaver Street Apartments	Dawn Redwood
149 Kent Place Boulevard	White Oak (pair)
101 Kent Place Boulevard	Swamp White Oak
69 New England Avenue	European Copper Beech
14 Pine Grove Avenue	White Oak
51 Pine Grove Avenue	Ginkgo
122 Prospect Street	Red Oak
Memorial Field on Ashland Road	White Oak
175 Canoe Brook Parkway	Magnolia
180 Canoe Brook Parkway	Kentucky Coffee Tree
50 Bedford Road	White Oak
Sherman Avenue	White Oak
Woodland Avenue (Presbyterian Church)	Black Oak
Village Green at Summit Avenue	Red Maple
43 Franklin Place	White Oak
28 Van Dyke Place	White Oak
5 Shadyside Place	Red Oak
10 Euclid Avenue	White Oak
19 Whittredge Road	White Oak
233 Springfield Avenue	Red Oak
219 Springfield Avenue	White Oak
165 Hobart Avenue (Reeves-Reed Arboretum)	European Copper Beech
165 Hobart Avenue (Reeves-Reed Arboretum)	Silverbell
165 Hobart Avenue (Reeves-Reed Arboretum)	Yellowwood Tree
165 Hobart Avenue (Reeves-Reed Arboretum)	Sourwood Tree
165 Hobart Avenue (Reeves-Reed Arboretum)	Franklin Tree
165 Hobart Avenue (Reeves-Reed Arboretum)	Bull Gay Magnolia
21 Woodfern Road	Bald Cypress

A "landmark tree" is defined as any tree designated and identified as such by the City Forester or any other person designated by the Summit Common Council, and affirmed by resolution of the Summit Common Council that meets one (1) or more of the following criteria:

1. The tree species is rare.
2. The tree is more than one hundred (100) years of age.
3. The tree is of an abnormal height or has an abnormal trunk diameter or dripline diameter for a tree of its species.
4. The quality of the tree foliage is abnormal for a tree of its species.
5. The location, shade value, fragrance, erosion control, aesthetic, features, or scenic enhancement of such tree is of special importance to the City of Summit.

Tree Dedication Program – City of Summit

Background – The City of Summit welcomes the donation of shade, flowering or evergreen trees to be planted within its parks or on public property. Donated trees can either be installed by the City or independent contractors.

Typical costs of dedicated trees range from \$150 – 500. Donated trees provide shade, a place for animals to live and help clean the air. Donated trees also create a lasting memory celebrating a significant event in someone's life or remembering someone special.

Sample dedications:

- Births and birthdays
- Baptisms and confirmations
- Bar Mitzvahs and Bat Mitzvahs
- Graduations
- Engagements and Weddings
- Anniversaries
- New jobs and retirements
- Holidays
- In memory of
- Special occasions

All donations must be approved by the Director of Community Services or designee. The species and location must be within a City-owned park or public property. If a plaque is required, it must be mounted flush with the ground to minimize future maintenance or possible vandalism.



Guidelines for Systematic Assessment

Many factors must be considered when performing a tree risk assessment. Use this sheet as a reference for performing systematic and comprehensive inspections.

Tree characteristics

- age
- species
- size
- live crown ratio
- pruning history
- tree/crown form
- environmental/ecological/historical significance

Tree health

- foliage color/density
- growth rate/vigor
- general decline/dieback
- pest infestation/disease

Structural Defect

- poor taper
- broken/hanging branches
- excessive end weight
- cracks or splits
- codominant/multiple stems
- dead limbs
- decay/cavities
- lean
- root loss/root rot
- weak attachment
- wounds/seams
- asymmetric form
- previous failure bow

Potential targets

- buildings
- people
- picnic/sitting areas
- utilities
- other structures or landscape features
- vehicles

Size of defective part

- small (small branches)
- medium (large branches)
- large (dominant leaders, main scaffold branches)
- whole tree (trunk, root flare, roots)

Site use

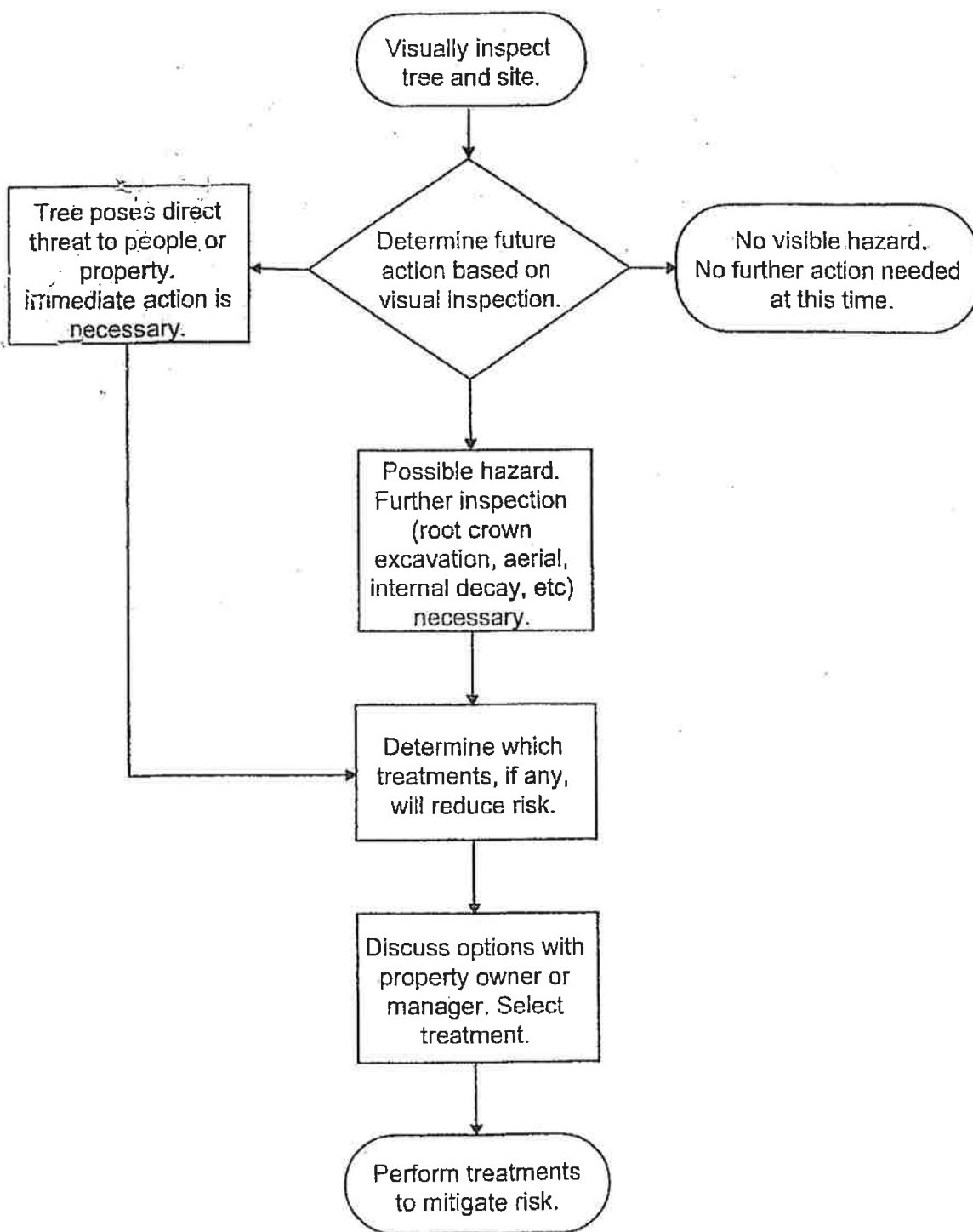
- no use
- occasional
- moderate
- constant use

Site conditions

- above/below ground utilities
- compacted soil
- poor drainage
- excessive irrigation
- soil type
- shallow soil
- restricted root area
- wind exposure
- potential for ice/snow loading
- site history
- recent disturbance
- construction activity



Individual Tree Risk Assessment Flow Chart



Date: _____



Time: _____
A.M.
P.M.

City of Summit
Dept. of Community Services
Rec. Parks & Shade Tree Unit

Address _____

OUR REPRESENTATIVE STOPPED BY

We will be:

- ☐ Removing a Tree _____
- ☐ Planting a New Tree _____
- ☐ Pruning Trees _____
- ☐ Stump Grinding _____

City Employee:

Joseph Guanill, R.P.S.T. Foreman - 908-277-9458