

Tatlock Park Multipurpose Fields

Summit,NJ

Grid Summary	
Name:	Blanket Grid Investor's Field
Spacing:	15.0' x 15.0'
Height:	3.0' above grade

Illumination Summary	
	INITIAL HORIZONTAL FOOTCANDLES
Scan Average:	Entire Grid
	7.21
	Maximum: 70
	Minimum: 0
No. of Points: 3337	
FIXTURE INFORMATION	
Applied Circuits:	A,B
No. of Fixtures:	38
Total Load:	46.90 kW


Guaranteed Performance: The ILLUMINATION described above is guaranteed per your Musco Warranty document.

Field Measurements: Individual field measurements may vary from computer-calculated predictions.

Electrical System Requirements: Refer to Amperage Draw Chart and/or the "Musco Control System Summary" for electrical sizing.

Installation Requirements: Results assume ± 3% nominal voltage at line side of the driver and structures located within 3 feet (1m) of design locations.





SCALE IN FEET 1 : 80

0'

80'

160'

ENGINEERED DESIGN

By: D.Abbott • File #116226E • 15-Sep-25

Pole location(s) ⊕ dimensions are relative to 0,0 reference point(s) ⊗

NOTES: Blue contour line represents 0.0 horizontal footcandles.

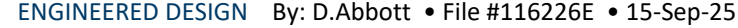


Not to be reproduced in whole or part without the written consent of Musco Sports Lighting, LLC.
©1981, 2025 Musco Sports Lighting, LLC.

ILLUMINATION SUMMARY

Structure				Fixtures				
QTY	STRUCTURE ID	SIZE	GRADE ELEVATION	ABOVE FIELD LEVEL	FIXTURE TYPE	QTY/POLE	THIS GRID	OTHER GRIDS
1	F1	80'	3'	83'	TLC-LED-1500	8	8	0
				18.5'	TLC-BT-575	2	2	0
1	F2	80'	-	80'	TLC-LED-1500	8	8	0
				15.5'	TLC-BT-575	2	2	0
2	F3-F4	70'	-	70'	TLC-LED-1500	7	7	0
				60'	TLC-LED-550	1	0	1
				15.5'	TLC-BT-575	2	2	0
4	Totals					40	38	2

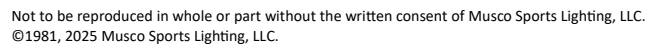
An aerial photograph of Summit High School's stadium. The stadium features a red running track surrounding a green football field. The field has yard lines and the word "SUMMIT" written vertically on both sides. A large "S" logo is in the center. Four survey points are marked with black crosses and labeled: F1 (top left), F2 (top right), F3 (bottom right), and F4 (bottom left). A blue line outlines the perimeter of the stadium area. The surrounding area includes residential houses, trees, and a road.



Grid Summary	
Name:	Blanket Grid Investor's Field
Spacing:	15.0' x 15.0'
Height:	3.0' above grade

INITIAL HORIZONTAL FOOTCANDLES	
	Entire Grid
Scan Average:	7.21
Maximum:	70
Minimum:	0
No. of Points:	3337
FIXTURE INFORMATION	
Applied Circuits:	A,B
No. of Fixtures:	38
Total Load:	46.90 kW

NOTES: Blue contour line represents 0.0 horizontal footcandles.



ILLUMINATION SUMMARY

Tatlock Park Multipurpose Fields

Summit,NJ

Grid Summary

Name:	Blanket Grid Upper Field
Spacing:	15.0' x 15.0'
Height:	30.0' above grade

Illumination Summary

INITIAL HORIZONTAL FOOTCANDLES	
Entire Grid	
Scan Average:	8.56
Maximum:	66
Minimum:	0
No. of Points:	2255
FITTURE INFORMATION	
Applied Circuits:	C
No. of Fixtures:	28
Total Load:	34.38 kW

Guaranteed Performance: The ILLUMINATION described above is guaranteed per your Musco Warranty document.

Field Measurements: Individual field measurements may vary from computer-calculated predictions.

Electrical System Requirements: Refer to Amperage Draw Chart and/or the "Musco Control System Summary" for electrical sizing.

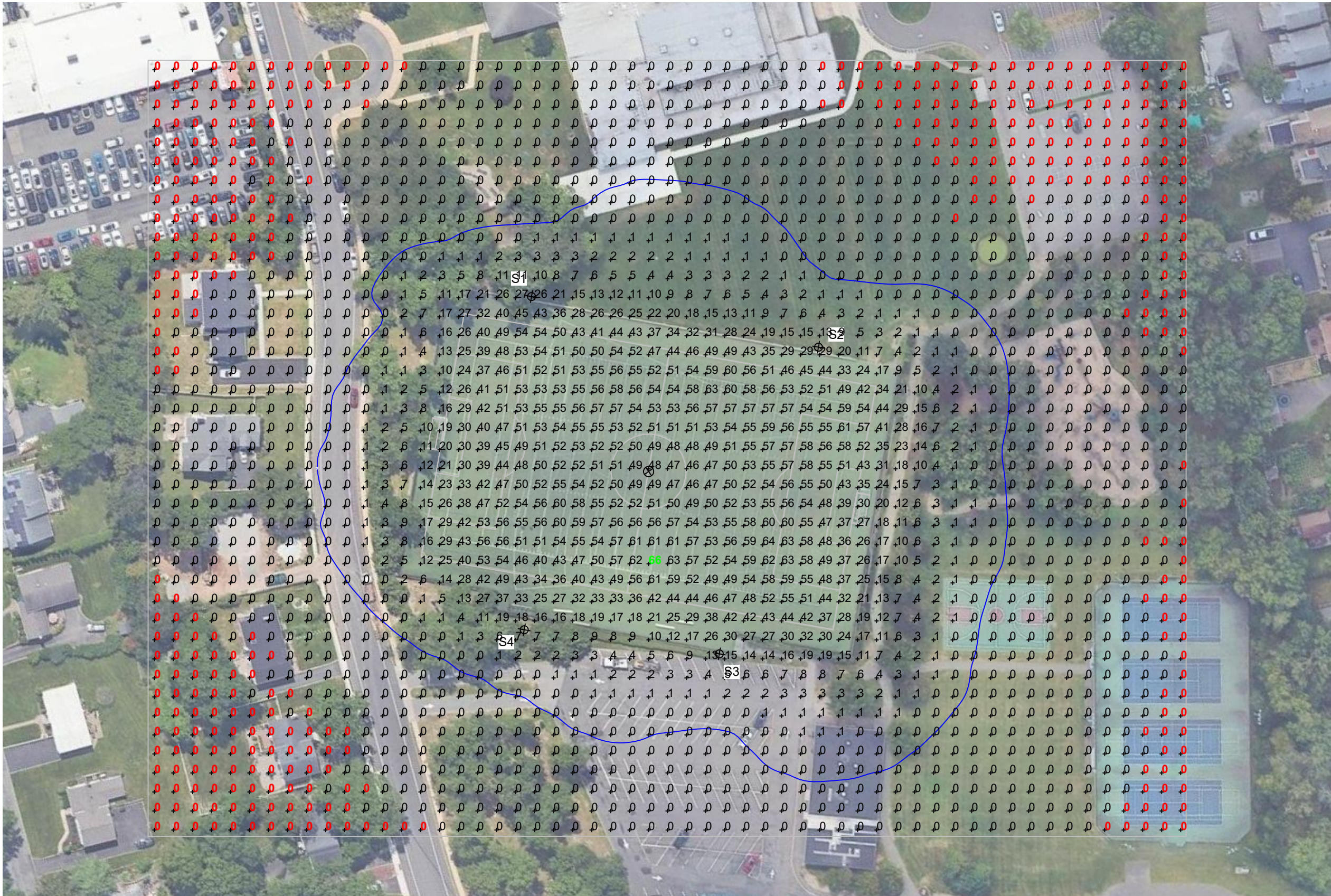
Installation Requirements: Results assume ± 3% nominal voltage at line side of the driver and structures located within 3 feet (1m) of design locations.


NOTES: Blue contour line represents 0.0 horizontal footcandles.



Not to be reproduced in whole or part without the written consent of Musco Sports Lighting, LLC.
©1981, 2025 Musco Sports Lighting, LLC.

ILLUMINATION SUMMARY





SCALE IN FEET 1 : 80

0'

80'

160'

ENGINEERED DESIGN

By: D.Abbott • File #116226E • 15-Sep-25

Pole location(s) ⊕ dimensions are relative to 0,0 reference point(s) ⊗

Equipment List For Areas Shown								
Structure				Fixtures				
QTY	STRUCTURE ID	SIZE	GRADE ELEVATION	ABOVE FIELD LEVEL	FIXTURE TYPE	QTY/POLE	THIS GRID	OTHER GRIDS
1	S1	70'	-	70'	TLC-LED-1200	1	1	0
				70'	TLC-LED-1500	3	3	0
				70'	TLC-LED-900	3	3	0
1	S2	70'	-	70'	TLC-LED-1200	3	3	0
				70'	TLC-LED-1500	4	4	0
1	S3	80'	-7'	73.0'	TLC-LED-1200	3	3	0
				73.0'	TLC-LED-1500	4	4	0
1	S4	80'	-7'	73.0'	TLC-LED-1200	1	1	0
				73.0'	TLC-LED-1500	3	3	0
				73.0'	TLC-LED-900	3	3	0
4	Totals					28	28	0

Above Field Level is height of fixtures above area shown





SCALE IN FEET 1 : 100

0'

100'

200'

ENGINEERED DESIGN By: D.Abbott • File #116226E • 15-Sep-25

Pole location(s) ⊕ dimensions are relative to 0,0 reference point(s) ⊗

Tatlock Park Multipurpose Fields

Summit,NJ

Grid Summary	
Name:	Blanket Grid Upper Field
Size:	330' x 195'
Spacing:	15.0' x 15.0'
Height:	3.0' above grade

Illumination Summary	
	INITIAL HORIZONTAL FOOTCANDLES
	Entire Grid
Scan Average:	8.56
Maximum:	66
Minimum:	0
No. of Points:	2255
FIXTURE INFORMATION	
Applied Circuits:	C
No. of Fixtures:	28
Total Load:	34.38 kW

Guaranteed Performance: The ILLUMINATION described above is guaranteed per your Musco Warranty document.

Field Measurements: Individual field measurements may vary from computer-calculated predictions.

Electrical System Requirements: Refer to Amperage Draw Chart and/or the "Musco Control System Summary" for electrical sizing.

Installation Requirements: Results assume ± 3% nominal voltage at line side of the driver and structures located within 3 feet (1m) of design locations.

NOTES: Blue contour line represents 0.0 horizontal footcandles.



Not to be reproduced in whole or part without the written consent of Musco Sports Lighting, LLC.
©1981, 2025 Musco Sports Lighting, LLC.

ILLUMINATION SUMMARY